

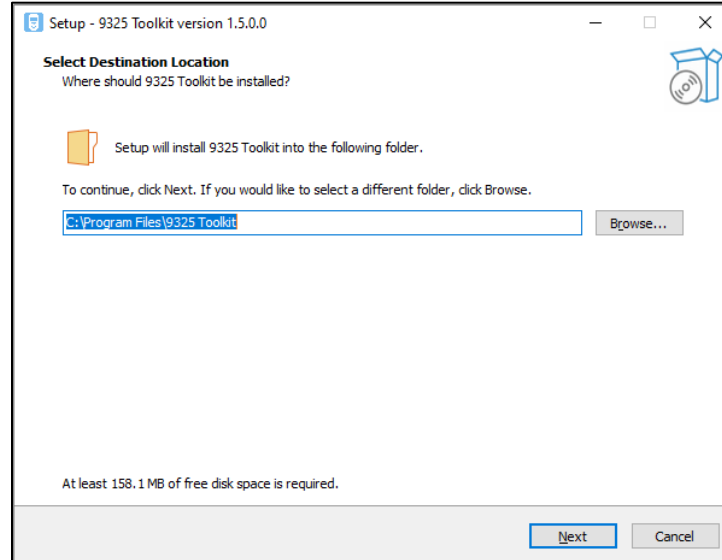
# 9325 Toolkit SW & Driver

## Install Instructions

### Install “9325 Toolkit Setup 1.5.0.0”

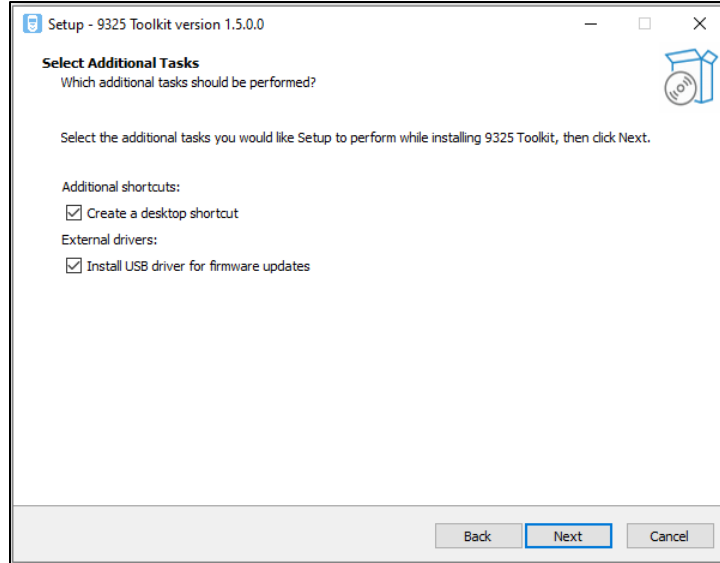
*\*\* This can be done without Administrator Privileges, but in some cases the installation may require Administrator Privileges if driver issues are present.*

1. Select “9325 Toolkit (Interface) Setup 1.5.0.0” to open and install.
  - a. This install will install the 9325 device drivers.
  - b. It will also provide the option to install the firmware update drivers.
  
2. Select Destination Location
  - a. Use of the default path is preferred but not required.
    - i. “C:\Program Files\9325 Toolkit”



- b. Select “Next”
  
3. Select Additional Tasks
  - a. Additional Shortcuts – when selected it will place a shortcut on the desktop.
  - b. External Drivers – USB Drivers for Firmware Updates
    - i. Check/Select this item to install the firmware update drivers in conjunction with the 9325 Toolkit and Device Drivers.

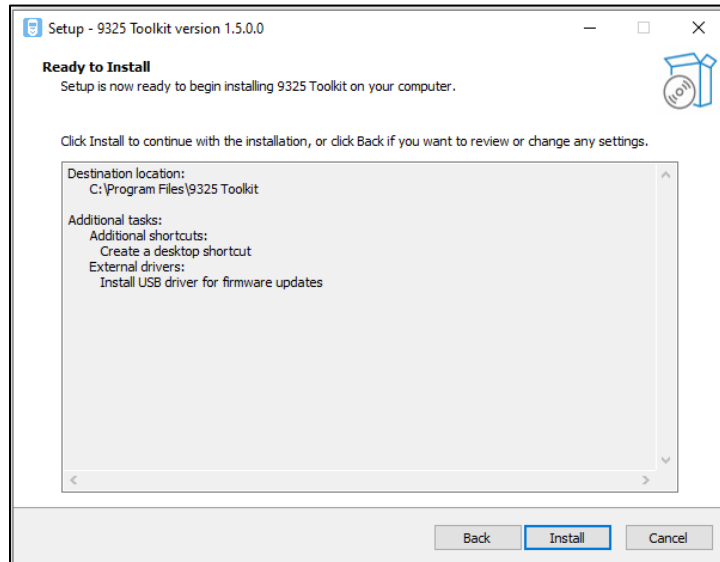
- ii. This install will include the device and firmware update drivers.



- c. Select "Next"

4. Ready to Install

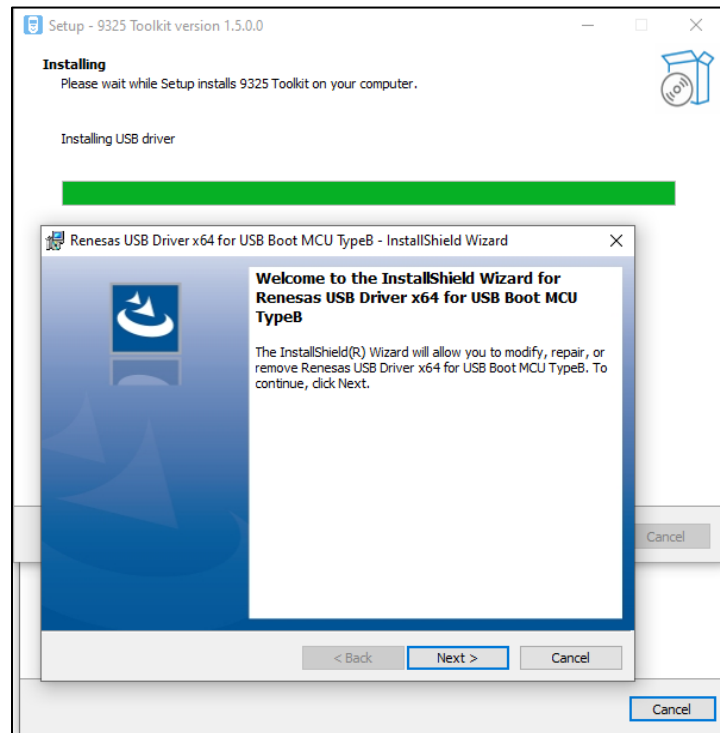
- a. Setup is now ready to begin installing 9325 Toolkit on your computer.
- b. Confirm details regarding the installation – location is in the window shown.



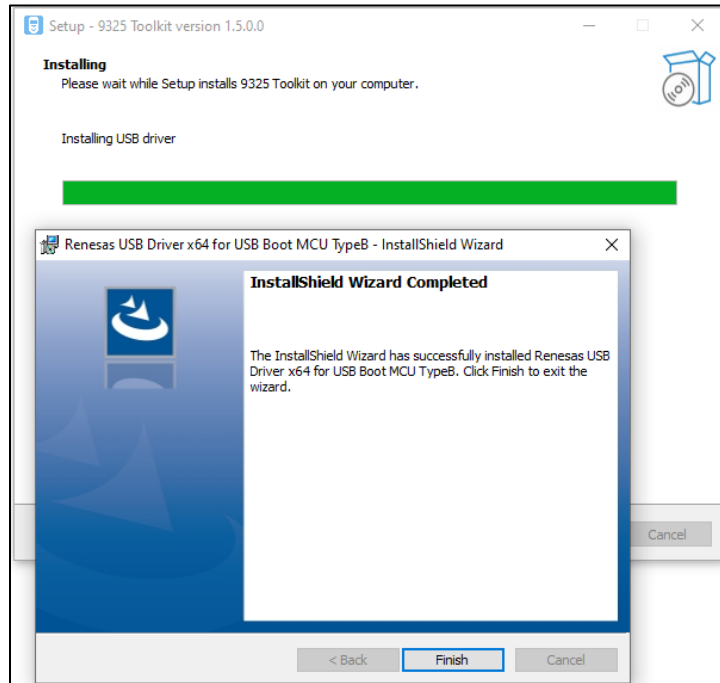
- c. Select "Install"

## 5. Install the USB Driver

- a. The 9325 Toolkit install will run and stop at a point to install the USB Driver and a new window will pop-up for the Renesas USB Driver for USB Boot MCU TypeB.

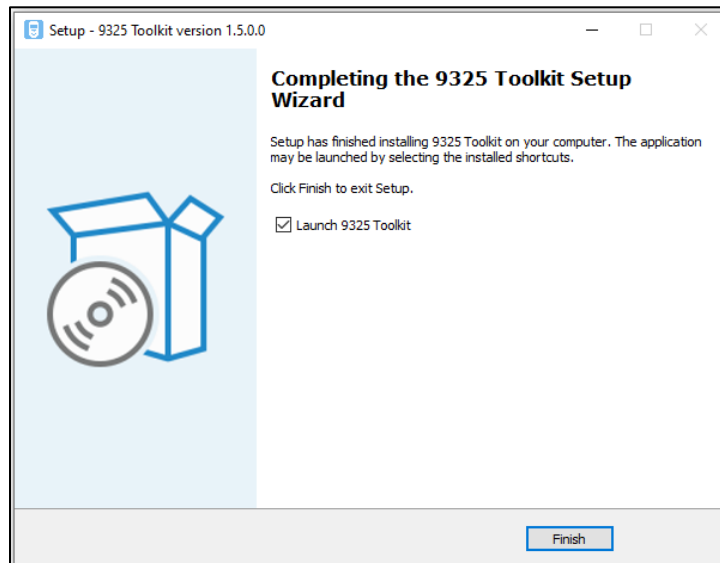


- i. Select "Next" on the USB Driver install window.  
*\*\* The driver install can take several minutes*



ii. Select "Finish" on the USB Driver install window to complete the install.

## 6. 9325 Toolkit Installation Complete



## Interface, Inc.

7418 East Helm Drive  
Scottsdale, AZ 85260  
Phone: 800-947-5598



### 7. Appendix A – Basic Firmware Update:

- a. Run 9325 Toolkit 1.5.0.0
  - i. Normal configuration **will not** require elevated access.
  - ii. Firmware programming and advanced configuration **will** require Administrator Privileges
  
- b. Open Device Manager and monitor Com Ports
  - i. Device will change when firmware update occurs.
  - ii. If this does not occur – possible firmware file/license key issue.
  
- c. Connect 9325 via micro-USB to PC – note in Device Manager the device and com port.
  - i. Note that the device displays in the 9325 software with details – note versions and SN#
  
- d. Navigate to the configuration tab and select “Firmware Update”.
  - i. Select the “rev2\_PSD\_Standard\_V1\_06\_000.srec” firmware file
  - ii. Update the device
    1. Note the Com Port changes during update
  
- e. Unplug device from USB and remove battery to reboot if installed
  
- f. Plug back into the PC and in the 1.5.0.0 software – check the versions and ensure the firmware has been updated to 1.06