

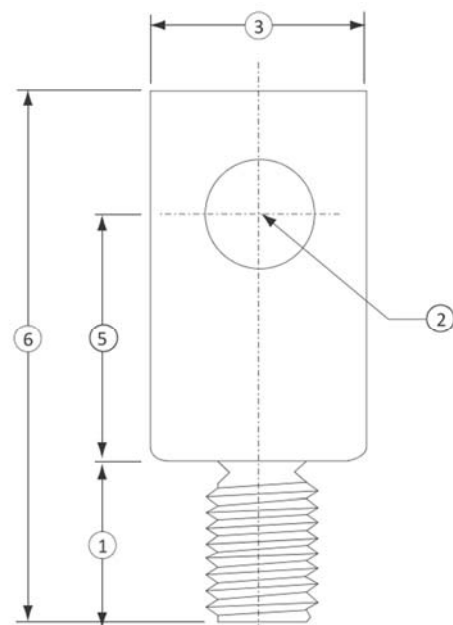
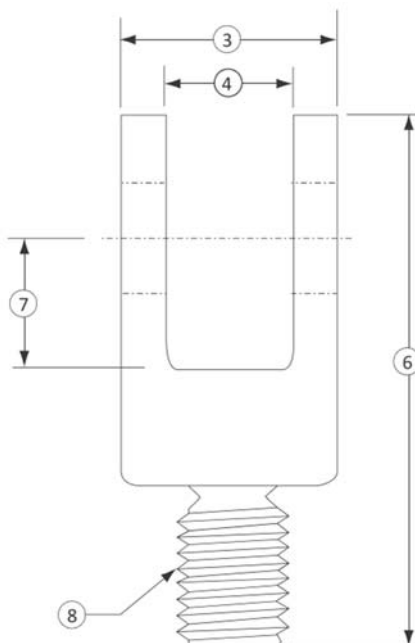
Gabelköpfe Gabelgelenk [clevises] CLV

- Hergestellt mit höchster Präzision
[precision machined]
- Einsatz z.B. zusammen mit Gelenkaugen
[commonly used with REB's]
- Außengewinde
[male threads]
- Material: gehärteter Stahl oder Aluminium
[material: heat treated steel or aluminium]



Abmessungen [dimensions]

| | CLV-104 | | CLV-105 | | CLV-106 | | CLV-101 | | CLV-102 | |
|----------|---|--------|--|-------|---------------------------------------|--------|---|-------|------------------------|-------|
| | SM-10 bis [thru] 250 SSM-50 bis [thru] 250 | | SM-500, -1000 SSM-500 bis [thru] 1000 | | SSM-2000 SSM-3000 | | 1110 1210-300 bis [thru] 10K SSM-5K | | 1120 1220-25K, -50K | |
| | in | mm | in | mm | in | mm | in | mm | in | mm |
| (1) | 5/16 | 7.9 | ½ | 12.7 | 9/16 | 14.3 | 7/8 | 22.2 | 1 3/8 | 34.9 |
| (2) | 0.251 | 6.38 | 0.501 | 12.73 | 0.501 | 12.73 | 0.626 | 15.9 | 1.001 | 25.43 |
| (3) | 0.75 | 19.1 | 1.5 | 38.1 | 1 | 25.4 | 1.25 | 31 | 2.5 | 64 |
| (4) | 0.377 | 9.58 | 0.627 | 15.93 | 0.627 | 15.93 | 0.752 | 19.10 | 1.38 | 35.05 |
| (5) | 0.75 | 19.1 | 1.5 | 38.1 | 1.5 | 38.1 | 1.5 | 38.1 | 2.875 | 73.03 |
| (6) | 1.4375 | 36.513 | 2.75 | 69.9 | 2.4375 | 61.913 | 3.125 | 79.38 | 5.75 | 146.1 |
| (7) | 0.4375 | 11.113 | 0.75 | 19.1 | 0.75 | 19.1 | 0.875 | 22.23 | 1.625 | 41.28 |
| (8) | ¼-28 | M6x1 | ½-20 | M14x2 | ½-20 | M14x2 | 5/8-18 | M18x2 | 1 ¼-12 | M36x4 |
| Material | Aluminium | | | | gehärteter Stahl [heat treated steel] | | | | | |



Weiteres Zubehör [further accessories]

| | | |
|---|--|---|
|  <p>Kalibrieradapter [calibration adapters]</p> |  <p>Kontermuttern [jam nuts]</p> |  <p>Gabelköpfe [rod end bearings]</p> |
|  <p>Gewindeadapter [thread adapters]</p> |  <p>Shunt Widerstand [rcal resistors]</p> |  <p>Montageplatten [mounting plates]</p> |
|  <p>TEDS Transducer Electronic Data-Sheet</p> |  <p>Drucklastknopf [load button]</p> |  <p>Klemmbox [terminal box]</p> |
|  <p>Gegenstecker [mating connectors]</p> |  <p>Anschlusskabel und Kabelkonfektionierung [cable & cable assembly]</p> |  <p>Steckerschutz [connector protection]</p> |
|  <p>8-Kanal Messverstärker [8 channel amplifier]</p> |  <p>TEDS Handmessgerät [TEDS handheld]</p> |  <p>4-Kanal Anzeige [4 channel display]</p> |
|  <p>Kalibrierrahmen [calibration frame]</p> |  <p>DMS Kalibrator [load cell simulator]</p> |  <p>Kalibriersystem [calibration system]</p> |