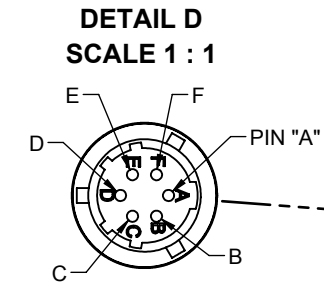


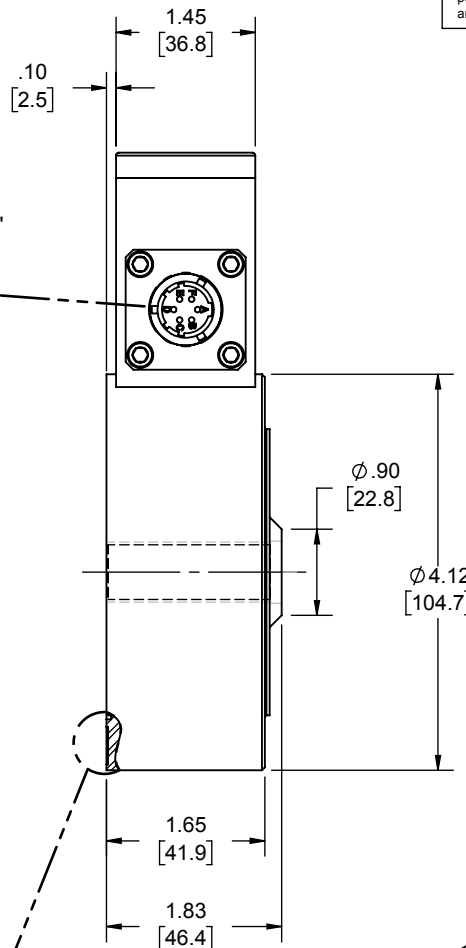
81609

Interface Inc. claims proprietary rights in the information disclosed herein. This drawing is furnished in confidence on the express understanding that neither it nor any reproduction thereof will be disclosed to others or used for the purpose of manufacture or procurement of the article or part shown herein without written permission of Interface Inc. The drawing shall remain the property of Interface Inc. and shall be returned upon request by Interface Inc.

REVISIONS			
REV.	DESCRIPTION	DATE	APPROVED
A	INITIAL RELEASE	01/12/16	LCG
B	UPDATED LABEL "Ta" WAS "TO", ADDED NOTES 1 & 2, SPOT WELD INFORMATION, & CONTROLLED DRAWING BLOCK	5/15/2017	CS



PTWIH-10-6P CONNECTOR PINOUT	
PIN	FUNCTION
A	+ SUPPLY 9-28 VDC
B	N / C
C	N / C
D	OUTPUT 4-20 mA
E	CASE GROUND
F	N / C
TENSION UPSCALE	



.625-18 UNF-3B THRU
 \square Ø.65 [16.4] ∇ .12 [3]

10 EVENLY-SPACED SPOT WELDS
 ALONG TOP AND BOTTOM LABEL EDGES
 AS SHOWN TO AFFIX TO FLEXURE

- A THIN BLADED INSTRUMENT IS USED TO APPLY A MODEST PRYING FORCE BETWEEN ADJACENT SPOT WELDS TO CONFIRM INTEGRITY OF SPOT WELD.
- LOCATE LABEL ONTO FLEXURE AS SHOWN.

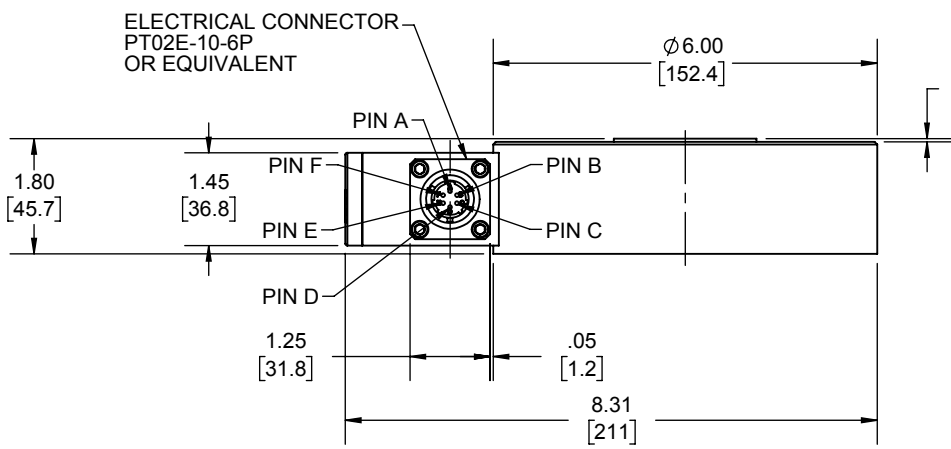
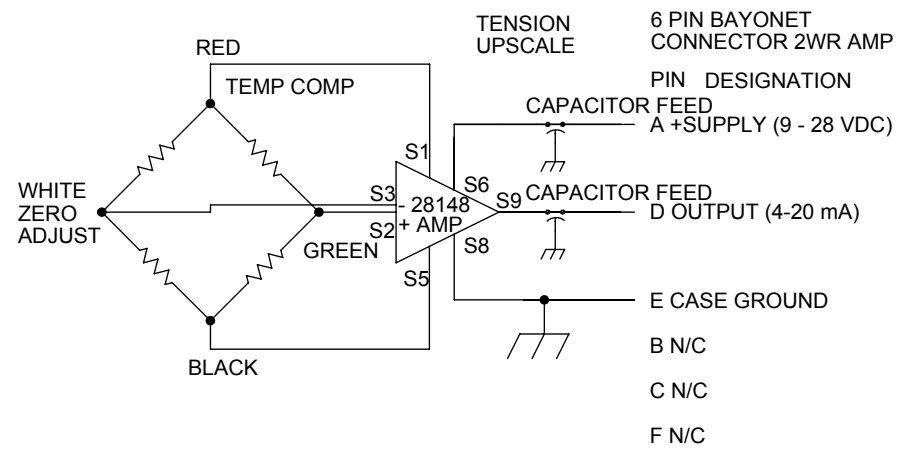
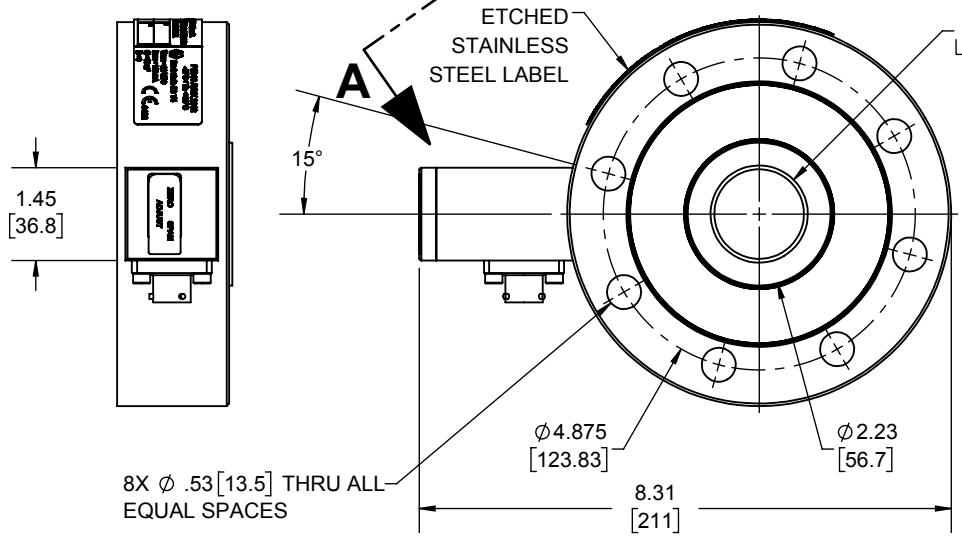
Ex Product Related Drawing
 Revision requires approval of person responsible for Ex certificate

UNLESS OTHERWISE SPECIFIED DIMENSIONS ARE IN INCHES [mm]		interface	
TOLERANCES ARE:		ADVANCED FORCE MEASUREMENT	
ANGLES ± 0° 30'		7401 E. BUTHERUS DR. SCOTTSDALE, AZ USA 85260	
.XX ± .01 [0.25]		TITLE:	
.XXX ± .005 [0.13]		OUTLINE MODEL:	
CREATOR	DATE	SIZE:	DWG. NO:
DESIGNED: JAMES R.	12/29/2015	A	81609
DETAILED: LUIS G.	01/05/2015	SCALE: 1:2	SHEET 1 OF 1
WEIGHT: (APPROX) (lbs)			REV: B

Interface Inc. claims proprietary rights in the information disclosed herein. This drawing is furnished in confidence on the express understanding that neither it nor any reproduction thereof will be disclosed to others or used for the purpose of manufacture or procurement of the article or part shown herein without written permission of Interface Inc. The drawing shall remain the property of Interface Inc. and shall be returned upon request by Interface Inc.

REVISIONS			
REV.	DESCRIPTION	DATE	APPROVED
A	INITIAL RELEASE	02/11/2008	
B	UPDATED LABEL "Ta" WAS "TO"	5/15/2017	CS

SEE DETAIL ON SHEET 2 OF 2

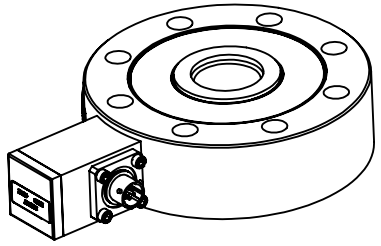


SPECIFICATIONS:

1. CAPACITY: 20K, 30K, 40K AND 50K lbf AS DENOTED BY THE PART NUMBER.
2. OVERLOAD: 150% SAFE AXIAL LOAD, 300% ULTIMATE AXIAL LOAD.
3. SENSING ELEMENT: 4000 OHM FULL STRAIN GAGE BRIDGE.
4. OUTPUT: 4-20 mA, APPROXIMATELY 12mA @ NO LOAD, LOOP POWERED.
5. COMPLIANCE: (EXCITATION VOLTS - 9 VOLTS) / .02 = OHMS.
6. EXCITATION: 9 - 28 VDC.
7. NONLINEARITY: 0.05% FS FOR 20K - 50K lbf.
8. HYSTERESIS: 0.05% FS FOR 20K - 50K lbf.
9. TEMPERATURE RANGE: COMPENSATED: 0 TO 150 F° [-18 TO 65C°]
OPERATING: -40 TO +200 F° [-40 TO +93 C°]
10. TEMPERATURE EFFECTS: ZERO: 0.002% RO / F° [0.0036% RO / C°]
SPAN: 0.002% / F° [0.0036% / C°]
11. CONSTRUCTION: 17-4 STAINLESS STEEL.
12. CONNECTOR: PTO2E-10-6P OR EQUIVALENT.
13. CERTIFICATION: CERTIFIED TO THE ATEX DIRECTIVE. INTRINSICALLY SAFE FOR USE IN ZONE 1 HAZARDOUS LOCATIONS WHEN INSTALLED IN ACCORDANCE WITH DRAWING W-1683.

Ex Product Related Drawing
Revision requires approval of person responsible for Ex certificate

ISO VIEW FOR REFERENCE ONLY NOT TO SCALE.



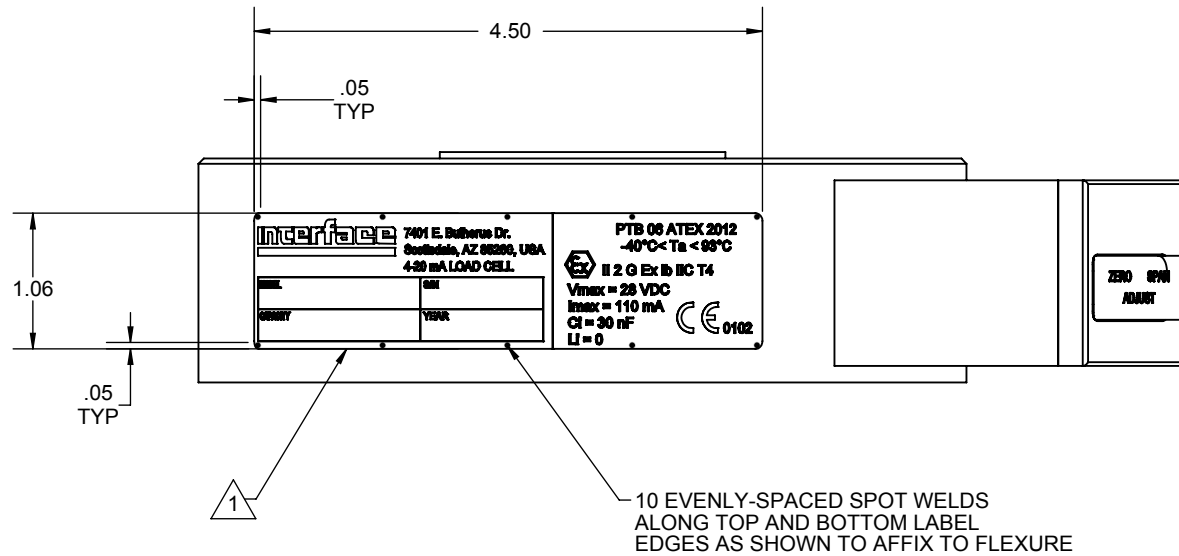
2. DIMENSIONAL TOLERANCE: ±0.01 [0.3]
1. DIMENSIONS IN INCHES [mm].

REMOVE BURRS AND SHARP EDGES .02 MAX SURFACE FINISH 32 MICROINCHES		interface ADVANCED FORCE MEASUREMENT 7401 E. BUTHERUS DR. SCOTTSDALE, AZ USA 85260	
CREATOR:	DATE:	TITLE: 3416 SERIES / PT02E CONN. SPEC. CONTROL DRAWING	
DESIGNED:		SIZE: A	DWG. NO: 80708
DETAILED: ME	02/11/2008	SCALE: 1:3	SHEET 1 OF 2
CAM DATA:			REV: B

Interface Inc. claims proprietary rights in the information disclosed hereon. This drawing is furnished in confidence on the express understanding that neither it nor any reproduction thereof will be disclosed to others or used for the purpose of manufacture or procurement of the article or part shown hereon without written permission of Interface Inc. The drawing shall remain the property of Interface Inc. and shall be returned upon request by Interface Inc.

80708

REVISIONS			
REV.	DESCRIPTION	DATE	APPROVED
-	See Sheet1	-	-



DETAIL: A-A

2. A THIN BLADED INSTRUMENT IS USED TO APPLY A MODEST PRYING FORCE BETWEEN ADJACENT SPOT WELDS TO CONFIRM INTEGRITY OF SPOT WELD.

1 LOCATE LABEL ONTO FLEXURE AS SHOWN.

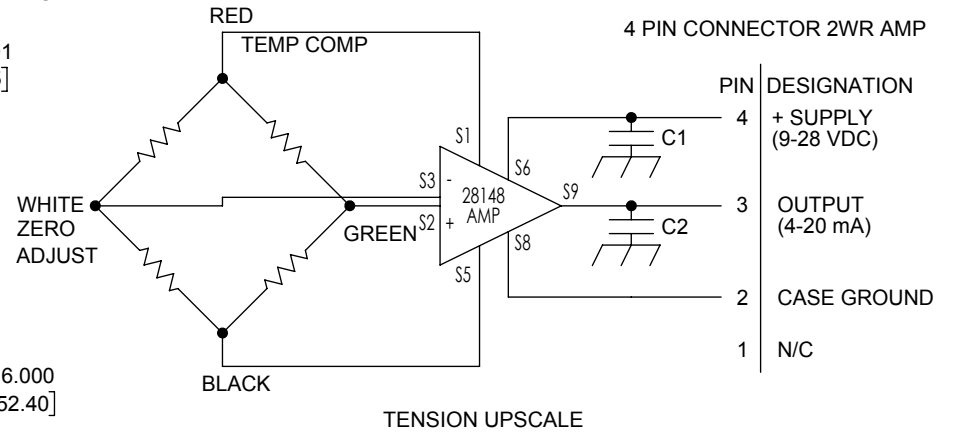
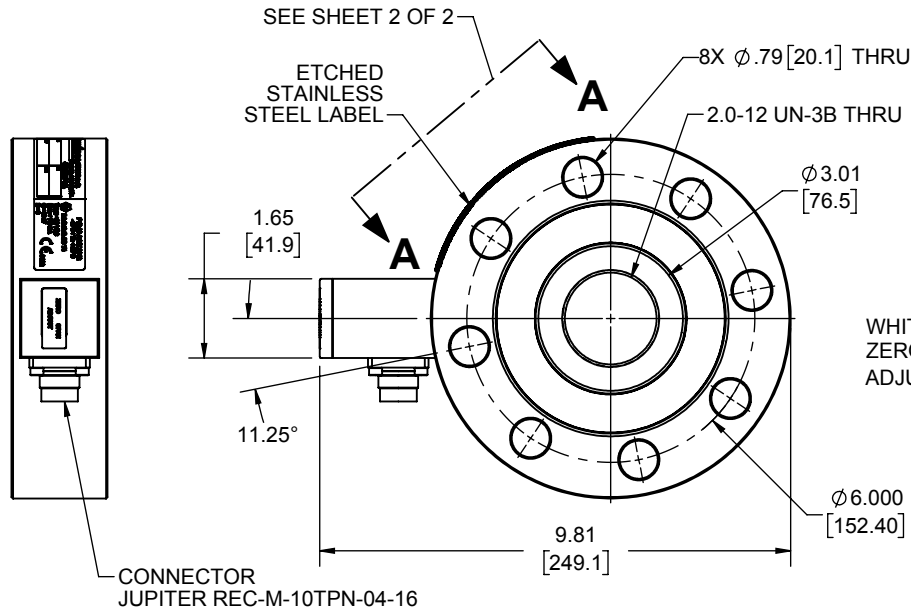
REMOVE BURRS AND SHARP EDGES .02 MAX SURFACE FINISH 32 MICROINCHES		interface	
CREATOR		ADVANCED FORCE MEASUREMENT	
DATE		7401 E. BUTHERUS DR. SCOTTSDALE, AZ USA 85260	
DESIGNED:		TITLE:	
DETAILED:		3416 SERIES / PT02E CONN.	
ME		SPEC. CONTROL DRAWING	
02/11/2008		SIZE: A	DWG. NO: 80708
CAM DATA:		SCALE: 1:1.5	SHEET 2 OF 2
		REV: B	

Interface Inc. claims proprietary rights in the information disclosed herein. This drawing is furnished in confidence on the express understanding that neither it nor any reproduction thereof will be disclosed to others or used for the purpose of manufacture or procurement of the article or part shown herein without written permission of Interface Inc. The drawing shall remain the property of Interface Inc. and shall be returned upon request by Interface Inc.

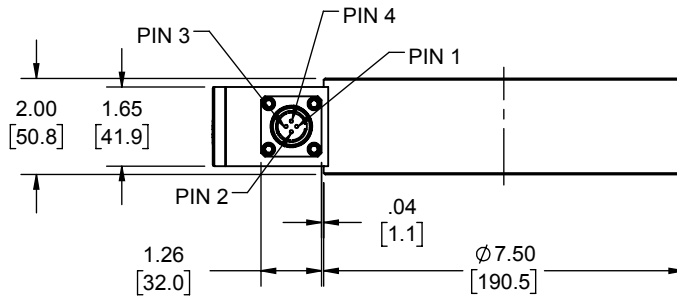
80569

REVISIONS

REV.	DESCRIPTION	DATE	APPROVED
D	NOTE 9. OPERATING -40 WAS -60	02/02/2006	
E	ADD NAME PLATE SPOT WELD	04/12/2006	
F	Ex WAS EEx	06/30/2010	
G	UPDATED LABEL "Ta" WAS "TO"	5/15/2017	CS



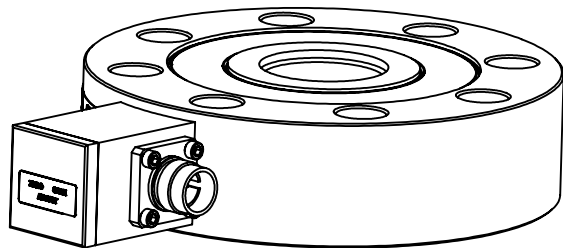
CONNECTOR JUPITER REC-M-10TPN-04-16



SPECIFICATIONS:

- CAPACITY: 20K, 40K, 50K, AND 60K lbf AS DENOTED BY THE PART NUMBER.
- OVERLOAD: 150% SAFE AXIAL LOAD, 300% ULTIMATE AXIAL LOAD.
- SENSING ELEMENT: 4000 OHM FULL STRAIN GAGE BRIDGE.
- OUTPUT: 4-20 mA, APPROXIMATELY 12 mA @ NO LOAD, LOOP POWERED.
- COMPLIANCE: (EXCITATION VOLTS - 9 VOLTS) / .02 = OHMS.
- EXCITATION: 9 - 28 VDC.
- NONLINEARITY: 0.05% FS FOR 20K - 50K, 0.1% FS FOR 60K lbf.
- HYSTERESIS: 0.05% FS FOR 20K - 50K, 0.08% FS FOR 60K lbf.
- TEMPERATURE RANGE: COMPENSATED: 0 TO 150 °F (-18 TO 65 °C).
OPERATING: -40 TO +200 °F (-40 TO + 93 °C).
- TEMPERATURE EFFECTS: ZERO: 0.002% RO/°F (0.0036% RO/°C).
SPAN: 0.002%/°F (0.0036%/°C).
- CONSTRUCTION: 17-4 STAINLESS STEEL.
- CONNECTOR: JUPITER - REC 10P TYPE WITH MALE PINS OR SIMILAR.
- CERTIFICATION: CERTIFIED TO THE ATEX DIRECTIVE. INTRINSICALLY SAFE FOR USE IN ZONE 1 HAZARDOUS LOCATIONS WHEN INSTALLED IN ACCORDANCE WITH DRAWING W-1683.

Ex Product Related Drawing
Revision requires approval of person responsible for Ex certificate



ISO VIEW FOR REFERENCE ONLY

- DIMENSIONAL TOLERANCE: ±0.01 (±0.3).
- DIMENSIONS IN INCHES (mm).

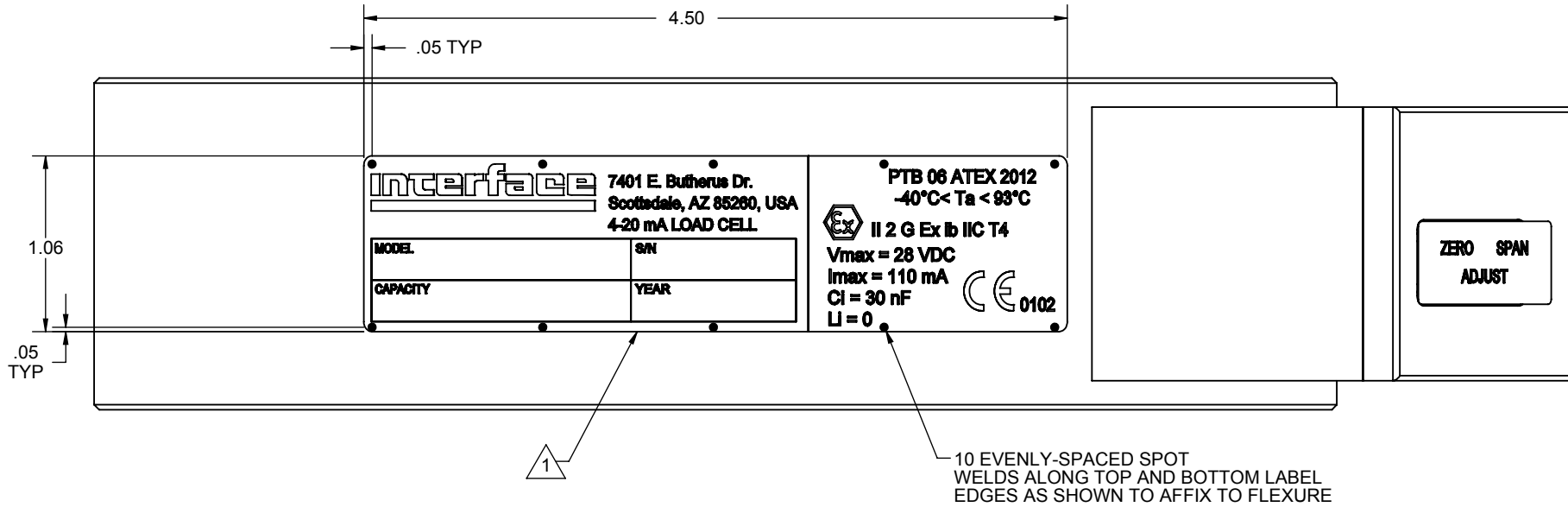
REMOVE BURRS AND SHARP EDGES .02 MAX SURFACE FINISH 63 MICROINCHES		interface ADVANCED FORCE MEASUREMENT 7401 E. BUTHERUS DR. SCOTTSDALE, AZ USA 85260	
CREATOR:	DATE:	TITLE: 3420 SERIES SPECIFICATION CONTROL DRAWING	
DESIGNED:			
DETAILED: JEP	09/08/2005		
CAM DATA:		SIZE: A	DWG. NO: 80569
		SCALE: 1:4	SHEET 1 OF 2
			REV: G

Interface Inc. claims proprietary rights in the information disclosed herein. This drawing is furnished in confidence on the express understanding that neither it nor any reproduction thereof will be disclosed to others or used for the purpose of manufacture or procurement of the article or part shown hereon without written permission of Interface Inc. The drawing shall remain the property of Interface Inc. and shall be returned upon request by Interface Inc.

80569

REVISIONS

REV	DESCRIPTION	DATE	APPROVED
	SEE SHEET 1 OF 2		



VIEW A-A

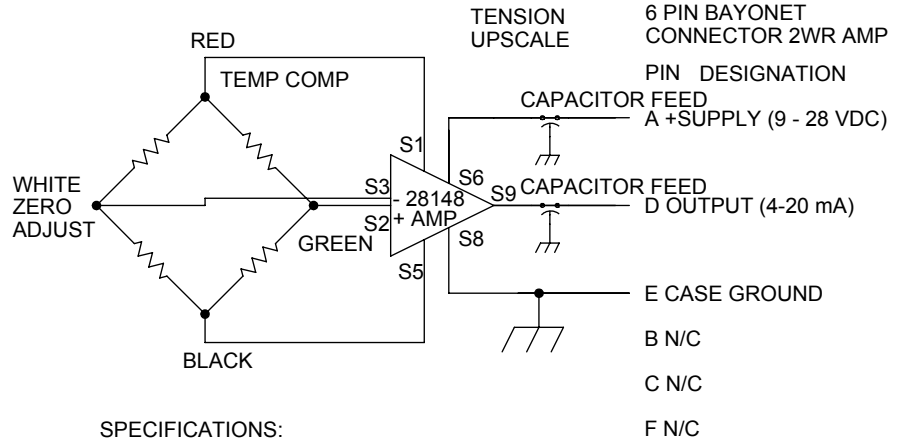
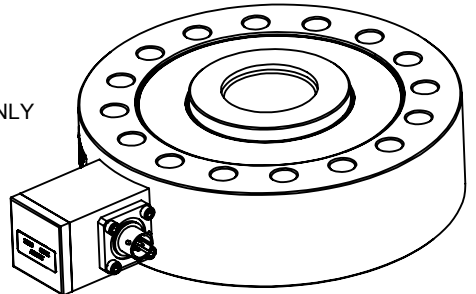
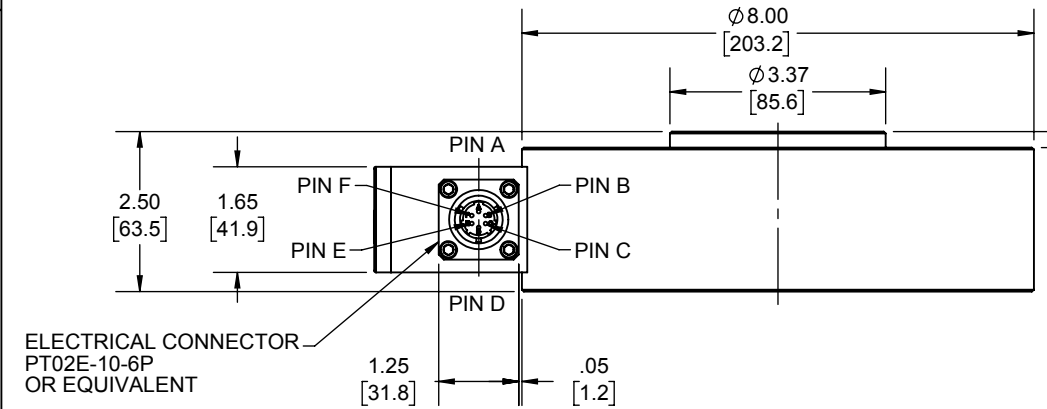
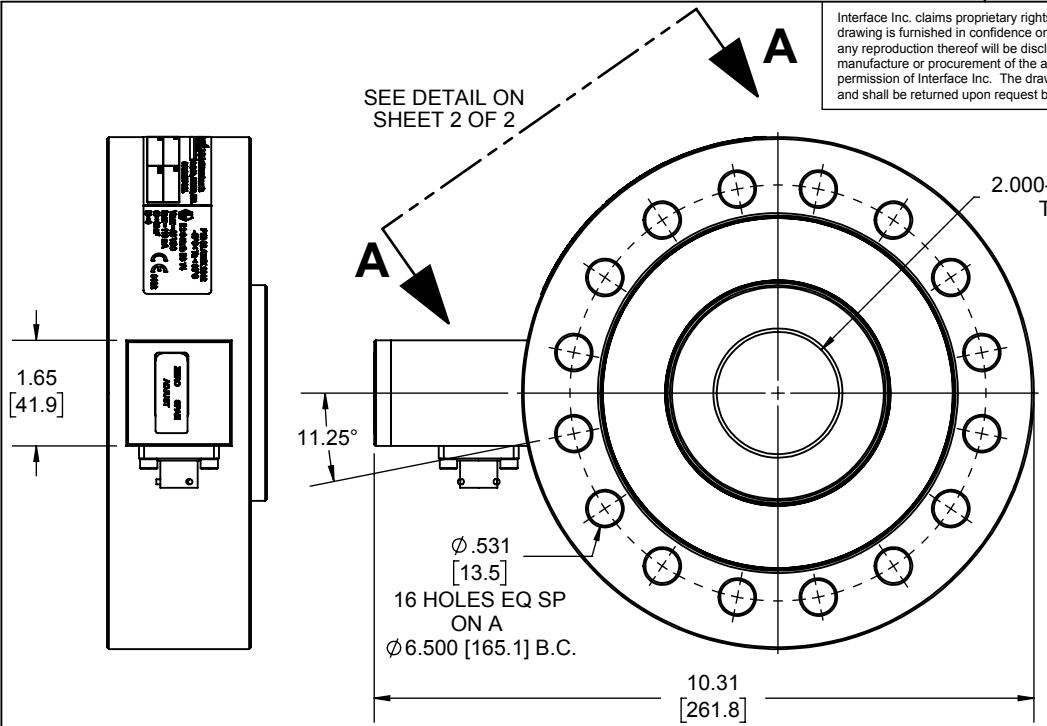
2. A THIN BLADED INSTRUMENT IS USED TO APPLY A MODEST PRYING FORCE BETWEEN ADJACENT SPOT WELDS TO CONFIRM INTEGRITY OF SPOT WELDS.

1 LOCATE LABEL ONTO FLEXURE AS SHOWN.

REMOVE BURRS AND SHARP EDGES .02 MAX SURFACE FINISH 63 MICROINCHES		interface	
CREATOR		ADVANCED FORCE MEASUREMENT	
DATE		7401 E. BUTHERUS DR. SCOTTSDALE, AZ USA 85260	
DESIGNED:		TITLE:	
DETAILED:		3420 SERIES SPECIFICATION	
JEP		CONTROL DRAWING	
CAM DATA:		SIZE: A	DWG. NO: 80569
		SCALE: 1:1	REV: G
		SHEET 2 OF 2	

Interface Inc. claims proprietary rights in the information disclosed herein. This drawing is furnished in confidence on the express understanding that neither it nor any reproduction thereof will be disclosed to others or used for the purpose of manufacture or procurement of the article or part shown herein without written permission of Interface Inc. The drawing shall remain the property of Interface Inc. and shall be returned upon request by Interface Inc.

REVISIONS			
REV.	DESCRIPTION	DATE	APPROVED
A	INITIAL RELEASE	12-14-06	
B	CORRECTED CONNECTION DIAGRAM	05-25-07	
C	1.26 WAS 0.94 & 0.13 WAS 0.27	07-15-08	
D	ADDED "50K OR" TO NOTE 1, 10.31 WAS 10.35, .05 WAS .13, 1.25 WAS 1.26, REDRAWN	07/10/15	DLC
E	ADDED 70K TO NOTE 1	07/29/16	DLC
F	UPDATED LABEL "Ta" WAS "TO"	5/15/2017	CS
G	ADDED 100K CAPACITY	04/17/2018	CS



SPECIFICATIONS:

- CAPACITY: 50K, 60K, 70K OR 100K lbf AS DENOTED BY THE PART NUMBER.
- OVERLOAD: 150% SAFE AXIAL LOAD, 300% ULTIMATE AXIAL LOAD.
- SENSING ELEMENT: 4000 OHM FULL STRAIN GAGE BRIDGE.
- OUTPUT: 4-20 mA, LOOP POWERED.
- COMPLIANCE: (EXCITATION VOLTS - 9 VOLTS) / .02 = OHMS.
- EXCITATION: 9 - 28 VDC.
- NONLINEARITY: 0.1% FS.
- HYSTERESIS: 0.08% FS.
- TEMPERATURE RANGE: COMPENSATED: 0 TO 150 F° [-18 TO 65C°]
OPERATING: -40 TO +200 F° [-40 TO +93 C°].
- TEMPERATURE EFFECTS: ZERO: 0.002% RO / F° [0.0036% RO / C°]
SPAN: 0.002% / F° [0.0036% / C°]
- CONSTRUCTION: 17-4 STAINLESS STEEL.
- CONNECTOR: PTO2E-10-6P OR EQUIVALENT.
- CERTIFICATION: CERTIFIED TO THE ATEX DIRECTIVE. INTRINSICALLY SAFE FOR USE IN ZONE 1 HAZARDOUS LOCATIONS WHEN INSTALLED IN ACCORDANCE WITH DRAWING W-1683.

Ex Product Related Drawing
Revision requires approval of person responsible for Ex certificate

UNLESS OTHERWISE SPECIFIED DIMENSIONS ARE IN INCHES [mm]
TOLERANCES ARE:
ANGLES ± 0° 30'
.XX ± .01 [0.25]
.XXX ± .005 [0.13]

CREATOR	DATE
DESIGNED: JEP	11/27/2006
DETAILED: JEP	11/27/2006
WEIGHT: (APPROX) 4.41 (lbs)	

Interface
FORCE MEASUREMENT SOLUTIONS. 7418 E. HELM DRIVE, SCOTTSDALE, AZ 85260 USA

TITLE:
3430 SERIES SPECIFICATION CONTROL DRAWING

SIZE: DWG. NO: **80636**

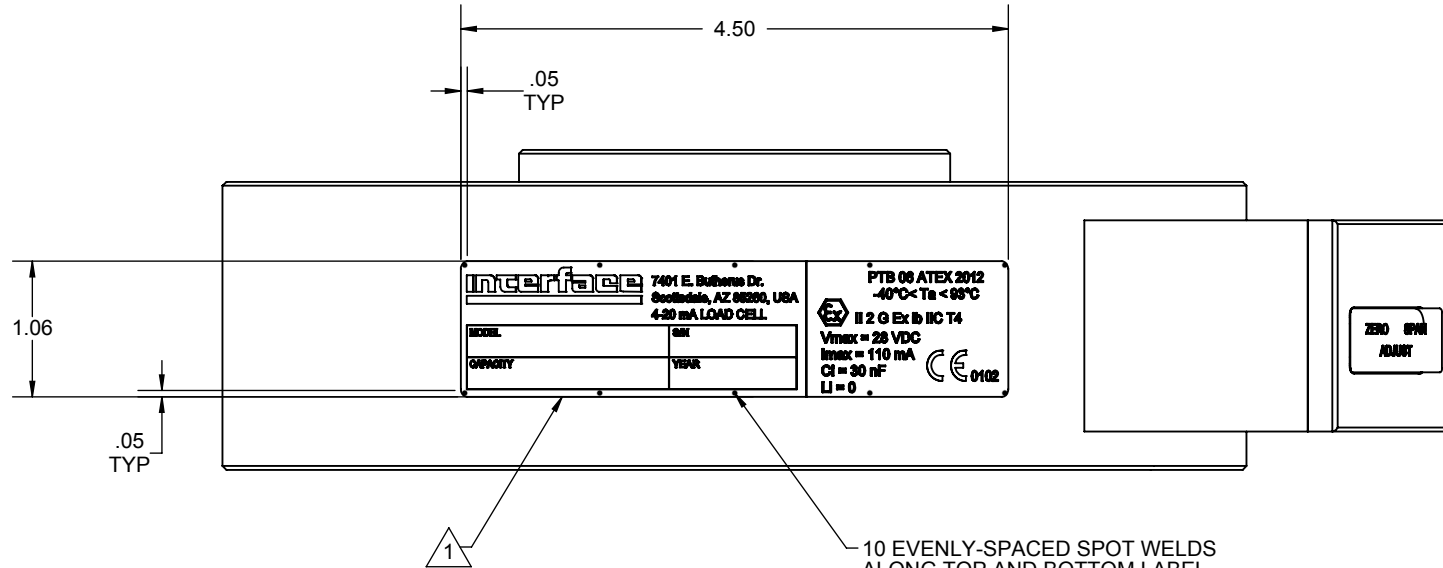
SCALE: 1:3 SHEET 1 OF 2

REV: **G**

Interface Inc. claims proprietary rights in the information disclosed herein. This drawing is furnished in confidence on the express understanding that neither it nor any reproduction thereof will be disclosed to others or used for the purpose of manufacture or procurement of the article or part shown hereon without written permission of Interface Inc. The drawing shall remain the property of Interface Inc. and shall be returned upon request by Interface Inc.

80636

REVISIONS			
REV.	DESCRIPTION	DATE	APPROVED
-	See Sheet1	-	-



DETAIL: A-A

2. A THIN BLADED INSTRUMENT IS USED TO APPLY A MODEST PRYING FORCE BETWEEN ADJACENT SPOT WELDS TO CONFIRM INTEGRITY OF SPOT WELD.

1 LOCATE LABEL ONTO FLEXTURE AS SHOWN.

UNLESS OTHERWISE SPECIFIED
DIMENSIONS ARE IN INCHES [mm]
TOLERANCES ARE:
ANGLES ± 0° 30'
.XX ± .01 [0.25]
.XXX ± .005 [0.13]

CREATOR	DATE
DESIGNED: JEP	11/27/2006
DETAILED: JEP	11/27/2006
WEIGHT: (APPROX) 4.41 (lbs)	

Interface 7418 E. HELM DRIVE
FORCE MEASUREMENT SOLUTIONS SCOTTSDALE, AZ 85260 USA

TITLE:
**3430 SERIES SPECIFICATION
CONTROL DRAWING**

SIZE: A	DWG. NO: 80636	REV: G
SCALE: 1:1.5	SHEET 2 OF 2	