

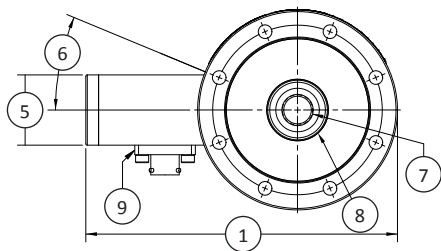
3410 INTRINSICALLY SAFE LOAD CELL (U.S. & METRIC)

FEATURES & BENEFITS

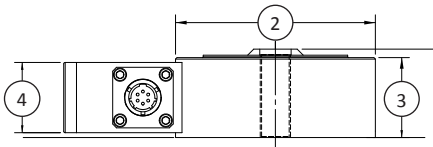
- Stainless steel construction
- Sealed connector
- IP68 environmental protection
- Internally amplified 4-20 mA output, loop-powered
- Unipolar (T or C) or bipolar (T and C)
- Zero and span adjustment access
- Explosion protection by Intrinsic Safety (approval pending) per ATEX designation:
II 2 G Ex ib IIC T4 (-40° C < Ta < 93° C)



Specially designed load cells with loop-powered intrinsically safe amplified output for use in oil field and other hazardous locations. These load cells are derived from other proven Interface models by adding high resistance strain gages for low-current loop power and shielded internal amplifier for extra low emissions and minimal EMI susceptibility.



TOP VIEW

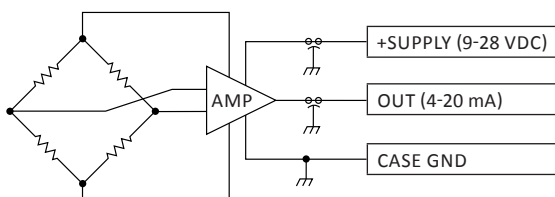


SIDE VIEW

DIMENSIONS

See Drawing	U.S. (in)	Metric (mm)
(1)	6.43	163.4
(2)	Ø4.12	Ø104.7
(3)	1.65	41.9
(4)	1.45	36.8
(5)	1.450	36.83
(6)	22.5°	
(7)	0.90	22.9
(8)	0.625-18 UNF-3B THRU, □ Ø0.65 ↓ 0.12	0.625-18 UNF-3B THRU, □ Ø16.4 ↓ 3.0
(9)	1.26	32.0

FUNCTIONAL DIAGRAM, MODEL 3400



STANDARD CONFIGURATION



Model 3410 (Shown)

SPECIFICATIONS

ACCURACY – (MAX ERROR)		
Nonlinearity – %FS		±0.05
Hysteresis – %FS		±0.05
Nonrepeatability – %RO		±0.02
Creep, in 30 min – %		±0.03
Side load sensitivity – %		±0.25
Eccentric load sensitivity		1.0
TEMPERATURE		
Compensated range	°F	0 to +150
	°C	-18 to +65
Operating range	°F	-60 to +200
	°C	-50 to +93
Effect on zero – %RO / °F MAX		±0.002
Effect on output – %RO / °F MAX		±0.002
ELECTRICAL		
Rated output – (Nominal) – mA Bipolar		±8.000 ± 0.008
Excitation voltage – VDC, VDC (Nominal)		+9 to +28, +15
Bridge resistance – Ω (Nominal)		4000
Zero balance – %RO		12.000 ± 0.100
Insulation resistance – MΩ MIN		5000
Loop resistance – Ω – VDC MAX		0 @ excitation = 9, 950 @ excitation = 28
MECHANICAL		
Safe overload – %CAP		±150
Ultimate, axial load – %CAP		±300
Safe side load – %CAP		50
Safe load axis moment – %CAP x 1 in		50
Deflection		0.002
Weight	lbs	5
	kg	2.3
Connector		PTW1H-10-6P
Seal		IP68
Calibration		T & C
Material		Stainless steel

* Metric dimensions and capacities are provided for conversion only. Standard product will be sold in lbf and U.S. dimensions. Metric capacities available upon special request and at an additional cost.