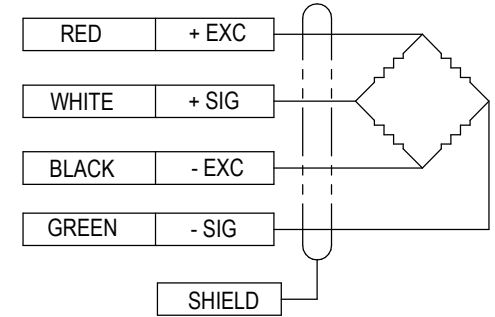
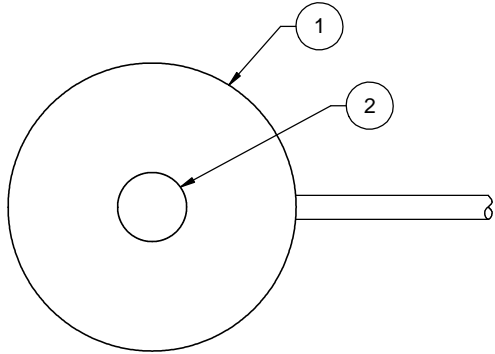


Interface Inc. claims proprietary rights in the information disclosed hereon. This drawing is furnished in confidence on the express understanding that neither it nor any reproduction thereof will be disclosed to others or used for the purpose of manufacture or procurement of the article or part shown hereon without written permission of Interface Inc. The drawing shall remain the property of Interface Inc. and shall be returned upon request by Interface Inc.

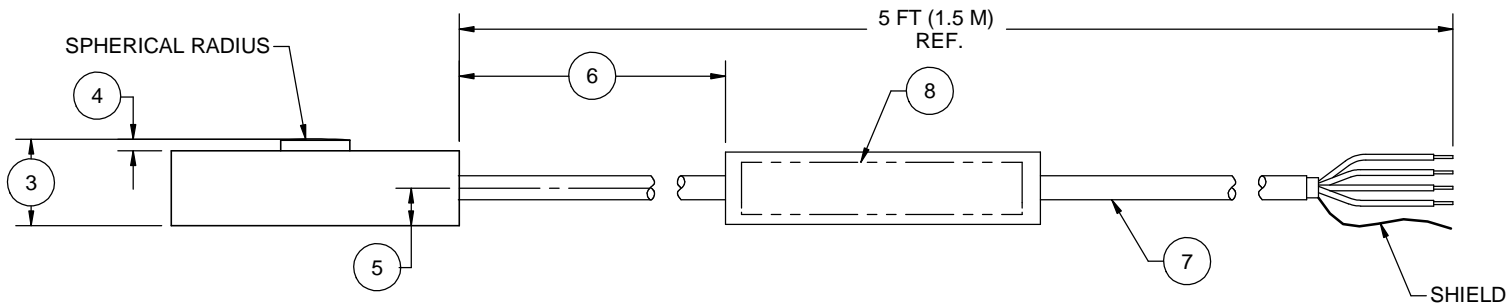
81203

REVISIONS

REV	DESCRIPTION	DATE	APPROVED
A	INITIAL RELEASE	11/15/12	<i>Me</i>



COMPRESSION UPSCALE



2. DIMENSIONAL TOLERANCE:  $\pm 0.01$  ( $\pm 0.3$ ).

1. DIMENSIONS IN INCHES (mm).

#	LOAD CELL CHARACTERISTICS	CAPACITIES
1	CAPACITY	100, 250 (lbf)
2	OUTSIDE DIAMETER	$\varnothing .50$ ( $\varnothing 12.7$ )
3	HUB DIAMETER	$\varnothing .12$ ( $\varnothing 3.0$ )
4	OVERALL HEIGHT	.15 (3.8)
5	HUB HEIGHT	.02 (0.5)
6	CABLE EXT HEIGHT	.06 (1.5)
7	LOAD CELL TO TEMP COMP CIRCUIT	$6 \pm 1$ ( $152 \pm 25$ ) REF.
8	CABLE	4 CONDUCTOR, 30 GAGE, BRAID SHIELD, NO JACKET, O.D. 0.05 REF.
9	IDENTIFICATION LABEL INCLUDING: MODEL, CAPACITY & SERIAL NUMBER	

REMOVE BURRS AND SHARP EDGES .02 MAX  
SURFACE FINISH 63 MICROINCHES

CREATOR	DATE
DESIGNED: KEN V.	11/01/12
DETAILED: RLP	11/01/12

CAM DATA: No	
--------------	--

<b>interface</b> ADVANCED FORCE MEASUREMENT 7401 E. BUTHERUS DR. SCOTTSDALE, AZ USA 85260	
TITLE: <b>OUTLINE, MODEL LBS-100, -250</b>	
SIZE: DWG. NO: <b>A 81203</b>	REV: <b>A</b>
SCALE: 3:1	SHEET 1 OF 1

CAD FILE <N:\-81203A.SLD\*\*\*>