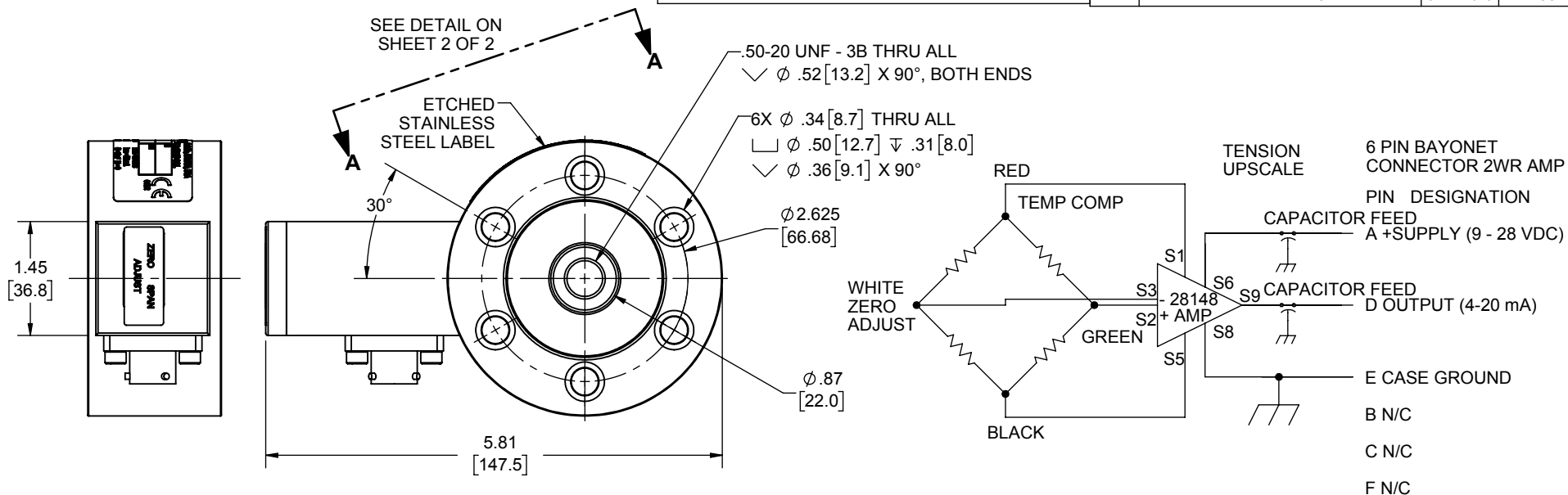


LOAD CELL CHARACTERISTICS	
CAPACITY	2K, 5K (lbf)

Interface Inc. claims proprietary rights in the information disclosed herein. This drawing is furnished in confidence on the express understanding that neither it nor any reproduction thereof will be disclosed to others or used for the purpose of manufacture or procurement of the article or part shown herein without written permission of Interface Inc. The drawing shall remain the property of Interface Inc. and shall be returned upon request by Interface Inc.

82246

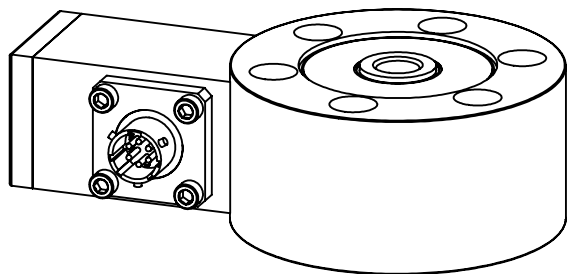
REVISIONS			
REV.	DESCRIPTION	DATE	APPROVED
A	INITIAL RELEASE	01/12/2018	CS



SPECIFICATIONS:

1. CAPACITY: 2K AND 5K lbf AS DENOTED BY THE PART NUMBER.
2. OVERLOAD: 150% SAFE AXIAL LOAD, 300% ULTIMATE AXIAL LOAD.
3. SENSING ELEMENT: 4000 OHM FULL STRAIN GAGE BRIDGE.
4. OUTPUT: 4-20 mA, APPROXIMATELY 12mA @ NO LOAD, LOOP POWERED.
5. COMPLIANCE: (EXCITATION VOLTS - 9 VOLTS) / .02 = OHMS.
6. EXCITATION: 9 - 28 VDC.
7. NONLINEARITY: 0.10% FS FOR 2K - 5K lbf.
8. HYSTERESIS: 0.08% FS FOR 2K - 5K lbf.
9. TEMPERATURE RANGE: COMPENSATED: 0 TO 150 F° [-18 TO 65C°]
OPERATING: -40 TO +200 F° [-40 TO +93 C°].
10. TEMPERATURE EFFECTS: ZERO: 0.002% RO / F° [0.0036% RO / C°]
SPAN: 0.002% / F° [0.0036% / C°]
11. CONSTRUCTION: 17-4 STAINLESS STEEL.
12. CONNECTOR: PT02E-10-6P OR EQUIVALENT.
13. CERTIFICATION: CERTIFIED TO THE ATEX DIRECTIVE. INTRINSICALLY SAFE FOR USE IN ZONE 1 HAZARDOUS LOCATIONS WHEN INSTALLED IN ACCORDANCE WITH DRAWING W-1683.

Ex Product Related Drawing
Revision requires approval of person responsible for Ex certificate



UNLESS OTHERWISE SPECIFIED
DIMENSIONS ARE IN INCHES [mm]
TOLERANCES ARE:
ANGLES ± 0° 30'
.XX ± .01 [0.25]
.XXX ± .005 [0.13]

CREATOR
DESIGNED: CS
DATE: 01/08/18
DETAILED: DAVID C.
WEIGHT: (APPROX) 4.34 (lbs)

Interface
FORCE MEASUREMENT SOLUTIONS
7418 E. HELM DRIVE
SCOTTSDALE, AZ 85260 USA

TITLE:
OUTLINE MODEL: 3412 SERIES / PT02E
CONN. SPEC CONTROL DRAWING

SIZE: DWG. NO: 82246
SCALE: 1:2
SHEET 1 OF 2
REV: A

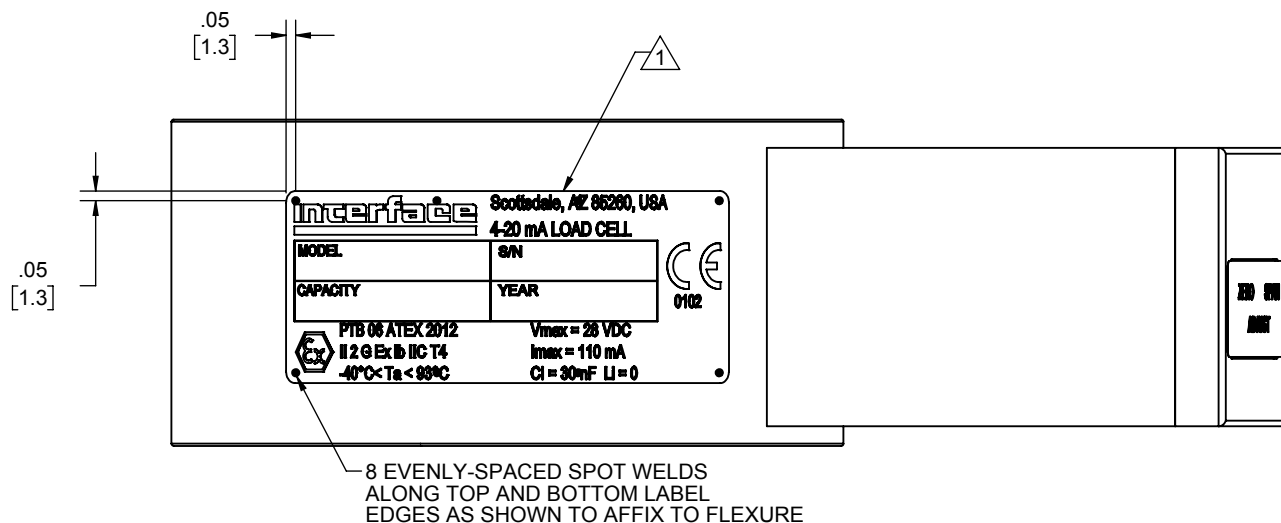
CAD FILE <_Document Vault\1-82246.SLD***>

Interface Inc. claims proprietary rights in the information disclosed hereon. This drawing is furnished in confidence on the express understanding that neither it nor any reproduction thereof will be disclosed to others or used for the purpose of manufacture or procurement of the article or part shown hereon without written permission of Interface Inc. The drawing shall remain the property of Interface Inc. and shall be returned upon request by Interface Inc.

82246

REVISIONS

REV.	DESCRIPTION	DATE	APPROVED
-	See Sheet1	-	-



DETAIL: A-A

2. A THIN BLADED INSTRUMENT IS USED TO APPLY A MODEST PRYING FORCE BETWEEN ADJACENT SPOT WELDS TO CONFIRM INTEGRITY OF SPOT WELD.

1 LOCATE LABEL ONTO FLEXTURE AS SHOWN.

UNLESS OTHERWISE SPECIFIED DIMENSIONS ARE IN INCHES [mm] TOLERANCES ARE: ANGLES ± 0° 30' .XX ± .01 [0.25] .XXX ± .005 [0.13]	
CREATOR	DATE
DESIGNED: CS	01/08/18
DETAILED: DAVID C.	01/08/2018
WEIGHT: (APPROX) 4.34 (lbs)	

Interface

7418 E. HELM DRIVE
SCOTTSDALE, AZ 85260 USA

TITLE:

OUTLINE MODEL: 3412 SERIES / PT02E
CONN. SPEC CONTROL DRAWING

SIZE: DWG. NO:

82246

REV:

A

SCALE: 1:1

SHEET 2 OF 2

CAD FILE <_Document Vault:\-82246.SLD***>