

## WTS-AM-XX ACQUISITION MODULES (U.S. & METRIC)

### MADE TO PROTECT

Every WTS transmitter module can be ordered in one of the three IP rated enclosures.

To aid your work, they provide:

- Power supply
- Water & dust protection
- Field connectivity
- Ready-made mounting solution

### SPECIFICATIONS

Enclosure		Large
Wireless Range	m	800
	ft	2,625
Power Supply – VDC		3-18 or 2 D Cell
Battery Life at 1 Transmission Per Second* – year		1
Antenna		WTS-ANTA
Radio Frequency – GHz		2.4
Operating Temperature	°C	-20 to 55
	°F	-4 to 131
Environmental Protection		IP67
Module Size	mm	164x84x57
	in	6.5x3.3x2.2
Software & Configuration		WTS Toolkit & WTSLOG100

Enclosure		Medium
Wireless Range	m	800
	ft	2,625
Power Supply – VDC		3 (2 AA Cell)
Battery Life at 1 Transmission Per Second – months		5
Antenna		WTS-ANTA
Radio Frequency – GHz		2.4
Operating Temperature	°C	-20 to 55
	°F	-4 to 131
Environmental Protection		IP67
Module Size	mm	80x62x34
	in	3.1x2.4x1.3
Software & Configuration		WTS Toolkit & WTSLOG100

Enclosure		Small
Wireless Range	m	500
	ft	1,640
Power Supply – VDC		3 (2 AAA Cell)
Battery Life at 1 Transmission Per Second* – months		2
Antenna		PCB Printed
Radio Frequency – GHz		2.4
Operating Temperature	°C	-40 to 80
	°F	-40 to 176
Environmental Protection		IP50
Module Size	mm	76x35x20
	in	3.0x1.4x0.8
Software & Configuration		WTS Toolkit & WTSLOG100

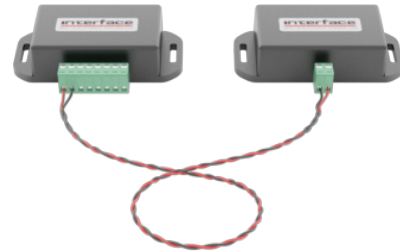
### 1 SENSOR INPUT 3 HOUSING OPTIONS



WTS-AM-XX LARGE ENCLOSURE (Shown)



WTS-AM-XX MEDIUM ENCLOSURE (Shown)



WTS-AM-XX SMALL ENCLOSURE (Shown)

### INPUT MODULES



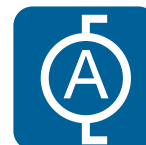
#### STRAIN

- WTS-AM-1E-D
- WTS-AM-1E
- WTS-AM-4



#### STRAIN (2kHz)

- WTS-AM-1F-D
- WTS-AM-1F
- WTS-AM-4F



#### CURRENT

- WTS-AM-3-D
- WTS-AM-3
- WTS-AM-6

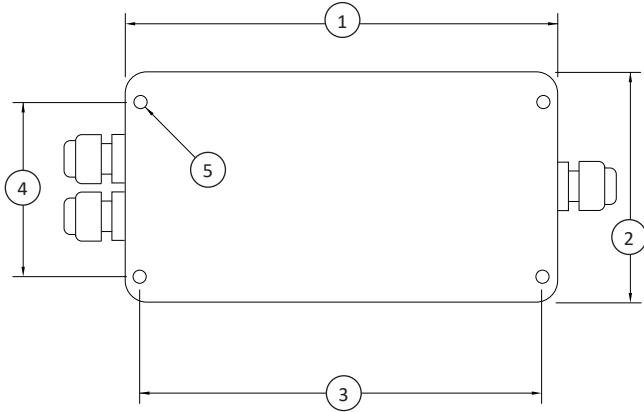


#### VOLTAGE

- WTS-AM-2-D
- WTS-AM-2
- WTS-AM-5

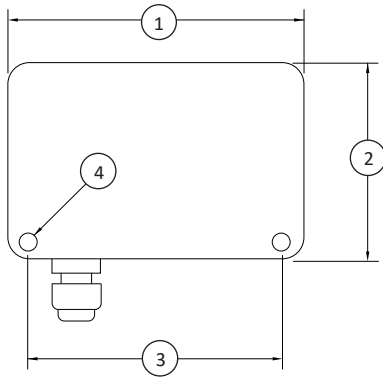
## WTS-AM-XX ACQUISITION MODULES (U.S. & METRIC)

### DIMENSIONS - LARGE ENCLOSURE



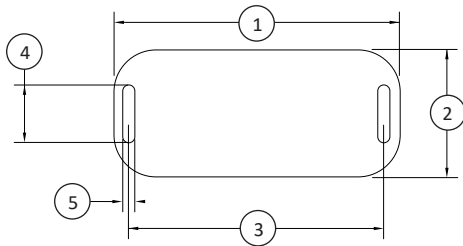
See Drawing	Metric (mm)	U.S. (in)
(1)	164	6.5
(2)	84	3.3
(3)	148	5.8
(4)	50	2.0
(5)	Ø4.5	Ø0.18
Height	57	2.2

### DIMENSIONS - MEDIUM ENCLOSURE



See Drawing	Metric (mm)	U.S. (in)
(1)	80	3.1
(2)	62	2.4
(3)	66.5	2.6
(4)	Ø4.8	Ø0.19
Height	34	1.3

### DIMENSIONS - SMALL ENCLOSURE



See Drawing	Metric (mm)	U.S. (in)
(1)	76	3.0
(2)	35	1.4
(3)	68	2.7
(4)	15	0.6
(5)	3.2	0.13
Height	20	0.8