

MODEL LP LOAD PIN (US & METRIC)

FEATURES & BENEFITS

- Capacities range up to 3,000K lbf (13.3K kN)
- Designed to replace pins or bolts that carry a load
- Stainless steel construction
- Used with clevises, or pulley shafts to monitor loads
- Custom designs

Industry applications:

- Tension / Compression Measurements
- Clevis Pin / Shackle Loading
- Sprockets & Pulley Axle
- Crane, Lifting & Winch System
- Mooring Line Tension Measurements
- Hydraulic Systems

Interface Load Pins are made with a dual-shear design and are designed which for center-loading with support from both ends. Interface load pins are strain gage based, the strain gages are installed in the inside-center, neutral axis of the load pin where they are protected from both physical damage and the environment. A full Wheatstone Bridge ensures the best specifications, while the physical design ensures proper alignment and anti-rotation of the application.

OPTIONS

- Integral connector
- Amplification (5VDC, 10VDC, 4-20mA)
- Wireless communication
- Bidirectional loading
- Dual bridge
- ATEX Approval
- High Temperature
- Submersible
- TEDS
- Anti-rotation Plate
- Shackles

STANDARD CONFIGURATION



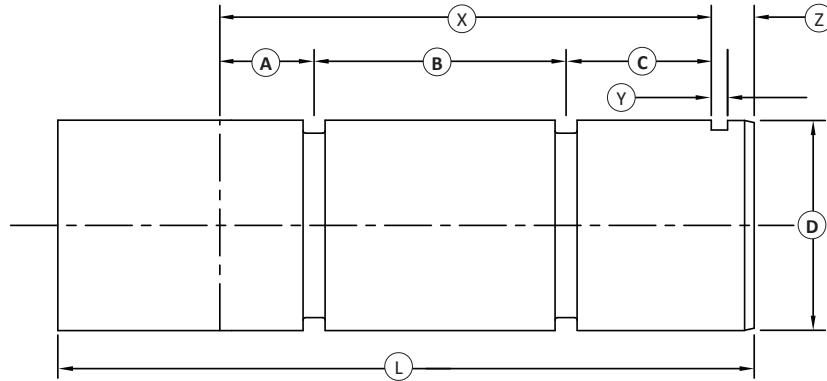
Model 3461EGY-3K (shown)

SPECIFICATIONS

ACCURACY – (MAX ERROR)		
Nonlinearity – %FS		±0.2 to 1.5 (typically) depending on pin geometry
Non-repeatability – %FS		±0.1
TEMPERATURE		
Compensated Range	°F	+14 to +158
	°C	-10 to +70
Operating Range	°F	-4 to +158
	°C	-20 to +70
Zero Temperature Coefficient – % of Rated Load / °C		±0.1
Span Temperature Coefficient – % of Rated Load / °C		±0.1
ELECTRICAL		
Rated Output – mV/V (Nominal)		1.5
Zero Balance – %RO		±1
Bridge Resistance – Ohm		350, 1000, 5000
Excitation Voltage - VDC MAX		15.0
Insulation Resistance – Megohm@VDC		500 @ 500
MECHANICAL		
Standard Calibration		Compression
Safe Overload – %Capacity		150
Ultimate Overload – %Capacity		300
Cable Length	ft	16.4
	m	5
Environmental Rating		IP67

MODEL LP LOAD PIN

LOAD PIN CONFIGURATOR



SECTION ONE PHYSICAL DIMENSIONS

Required Dimensions:						Computed Dimensions:			
	in	mm		in	mm	X	Y	Z	L
A:			C:						
B:			D:			*estimated - final dimensions may vary			

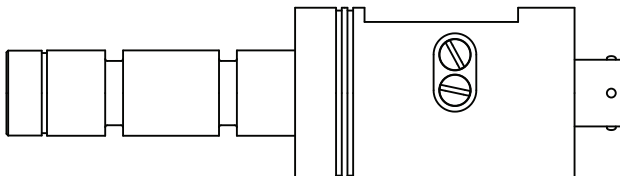
SECTION TWO FEATURES & APPLICATION

Application:					
1. Static Force / Load			4. Tractor Draw Bar Pull		7. Conveyor Loading
2. Dynamic Force / Load			5. Mooring Linkage		8. Line Tensiometer
3. Hoisting Load			6. Fork Lift Loading		9. Other

Capacity:			Output Signal:			ATEX Required:	
		tonne		mV/V		No	
		K lbf		4-20mA		ATEX"D"	
		kN		0-10V		ATEX"N"	
				RS485		ATEX"I"	

EN 60529 Protection Level:					Cable Length:	
	IP65					
	IP66					
	IP67					
	IP68					
	IP69K					

MOUNTING CONFIGURATION



Various mounting configurations are available.

Shown: Typical mounting with anti-rotational slot near the end; connector output at housing base.