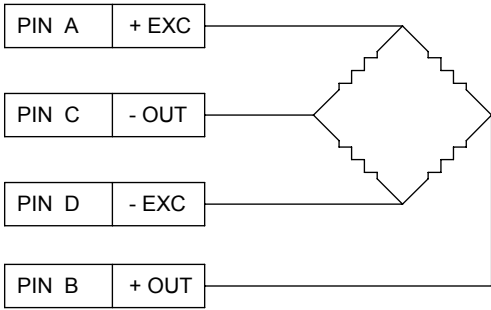
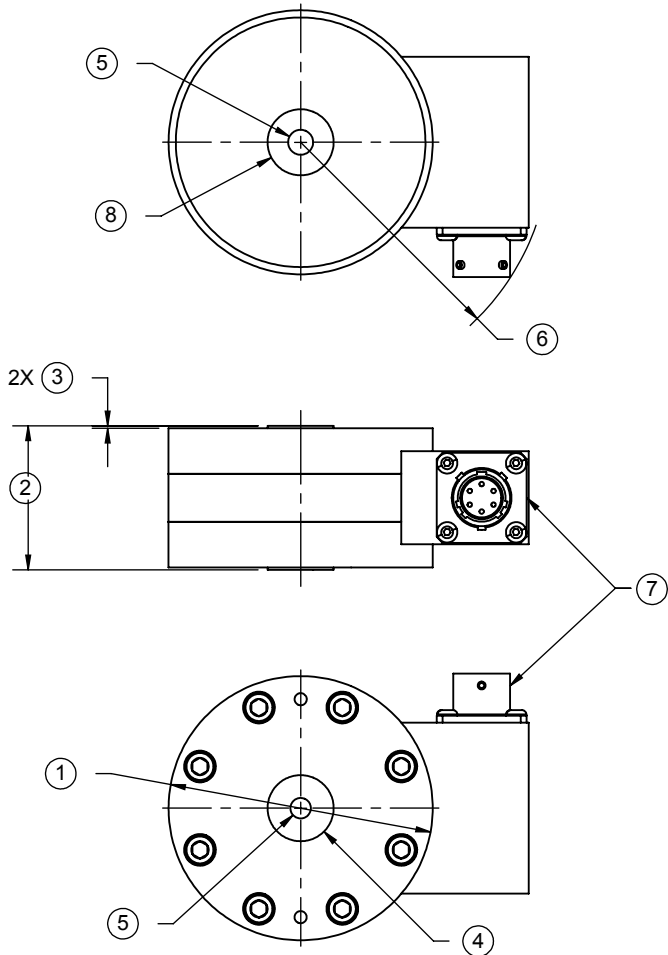


Interface Inc. claims proprietary rights in the information disclosed herein. This drawing is furnished in confidence on the express understanding that neither it nor any reproduction thereof will be disclosed to others or used for the purpose of manufacture or procurement of the article or part shown herein without written permission of Interface Inc. The drawing shall remain the property of Interface Inc. and shall be returned upon request by Interface Inc.

80183

REVISIONS

REV.	DESCRIPTION	DATE	APPROVED
A	ADDED 25 (lbf) TO CAPACITY	03/23/98	
B	ROTATE MTG HOLES 22.5°	01/27/00	
C	ADD 125 (N), REMOVE Ø.503	02/09/15	LCG



TENSION UPSCALE

2. DIMENSIONAL TOLERANCE  $\pm 0.01$  (0.3)

1. DIMENSIONS IN INCHES & (mm)

LOAD CELL CHARACTERISTICS		U.S. CAPACITIES	SI CAPACITIES
CAPACITY		25, 50, 100, 200, 300 (lbf)	125, 250, 500, 1000, 1500 (N)
1	LOAD CELL DIAMETER	2.750	(69.8)
2	LOAD CELL OVERALL HEIGHT	1.500	(38.1)
3	PAD THICKNESS	0.025	(0.6)
4	BASE PAD DIAMETER	0.688	(17.5)
5	THREAD (HELICOIL)	.250-28 UNF X .25 DEEP	M6x1-6H X (6) DEEP
6	ROTATIONAL CLEARANCE	2.582	(65.6)
7	CONNECTOR TYPE	PT02E-10-6P (BOTH ENDS ON DUAL BRIDGE)	
8	FLEXURE PAD DIAMETER	.688	(17.5)
9	IDENTIFICATION LABEL INCLUDING, MODEL, CAPACITY & SERIAL NUMBER		

UNLESS OTHERWISE SPECIFIED DIMENSIONS ARE IN INCHES TOLERANCES ARE: ANGLES $\pm 0^{\circ}30'$ .XX $\pm .010$ .XXX $\pm .005$ STD. RADII $.015 - .035$ $\phi$ RUNOUT $.002$		REMOVE BURRS AND SHARP EDGES .02 MAX SURFACE FINISH 32 MICROINCHES		<b>interface</b> ADVANCED FORCE MEASUREMENT 7401 E. BUTHERUS DR. SCOTTSDALE, AZ USA 85260	
		CREATOR	DATE	TITLE:	
		DESIGNED: JEP	03/23/98	OUTLINE MODEL: 1500	
		DETAILED: JEP	03/23/98	SIZE: DWG. NO: 80183	
MATERIAL:	WEIGHT:			SCALE: 1:2	REV: C
FINISH:	OUTPUT:	CAM DATA:		SHEET 1 OF 1	