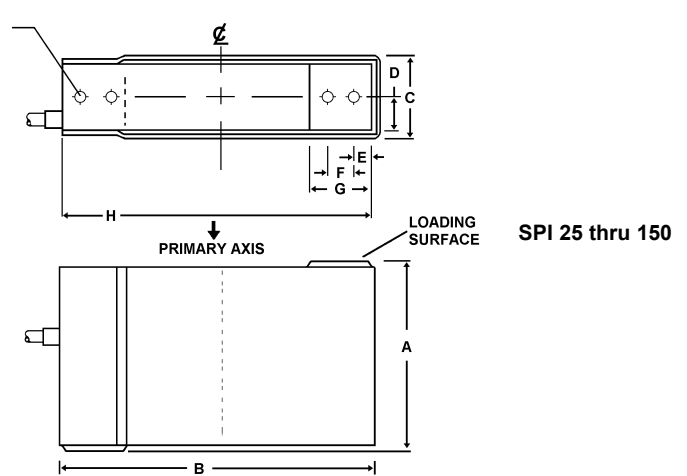
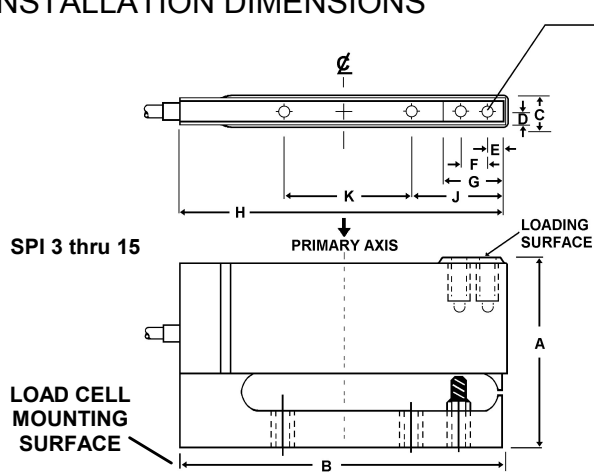


INSTALLATION DIMENSIONS



Model	A	B	C	D	E	F	G	H	J	K	L	Torque in-lb	
SPI-3	in.	3	5-1/8	1/2	3/16	1/4	1/2	1	5	1 1/2	2	10-32	24
	mm	76	130	12.7	4.2	6.4	12.7	25	127	38	51		
SPI-7.5	in.	3	5-1/8	3/4	1/4	1/4	1/2	1	5	1 1/2	2	1/4-28	36
	mm	76	130	19	6.4	6.4	12.7	25	127	38	51		
SPI-15	in.	3	5-1/8	1 1/4	1/2	1/4	1/2	1	5	1 1/2	2	1/4-28	36
	mm	76	130	32	12.7	6.4	12.7	25	127	38	51		

Model	A	B	C	D*	E*	F*	G*	H	L	Torque in-lb	
SPI-25 & 50	in.	3	5 1/8	1 1/4	1/2	1/4	1	1 1/2	5 1/8	1/4-28	60
	mm	76	130	32	12.7	6.4	25	38	130		
SPI-100	in.	3	6 1/8	1 1/4	1/2	1/4	1	1 1/2	6	1/4-28	60
	mm	76	156	32	12.7	6.4	25	38	152		
SPI-AAB-50 SPI-150	in.	3	6 1/8	1 1/4	1/2	1/4	1	1 1/2	6	1/4-28	90
	mm	76	156	32	12.7	6.4	25	38	152		

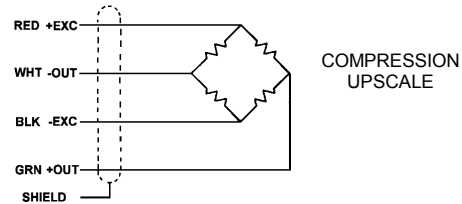
Warning: Exceeding recommended torque levels may damage load cells.
Mounting Instructions: fasten mounting surface to flat surface with two mounting screws.

* Typical two places on all SPI 25 thru 150
Fasten load receiver to loading surface with two screws.

ELECTRICAL INFORMATION

SPI Series is provided with 4-conductor shielded cable (AWG 28) 5 feet (1.5m) long.

Wiring color code complies with ISA S37.8. "Specifications and Tests for Strain Gage Force Transducers" and SMA Load Cell Terminology.



APPLICATION NOTES

- Single Point I load cells are designed for controlled environment applications. In general they can be used anywhere a readout instrument is used.
- A moisture resistant coating is applied to protect the SPI Series from high humidity conditions up to and including 95% relative humidity and periodic exposure to condensation. These units are not intended for submerged operation.
- Recommended mounting screw thread engagement is 3/8 to 1/2 in. (9 to 13mm).
- Mounting surfaces should be level within 0.5 for best shift error.
- Please exercise caution to avoid overloading these low capacity load cells while handling and installing them.

6. Maximum Moment

Rated Capacity	Maximum Moment
0-3 lb.	9 lb. - in.
0-7.5 lb.	22.5 lb. - in.
0-15 lb.	45 lb. - in.
0-25 lb.	125 lb. - in.
0-50 lb.	250 lb. in.
0-100 lb.	500 lb. - in.
0-150 lb.	500 lb. - in.

- Applications involving impact/overload forces may require external stops. Request Interface publication IFI #59 for additional information.

PERFORMANCE DATA

Nominal Output - mV/V
 Input Resistance Ohms
 Output Resistance Ohms
 Recommended Excitation Vdc
 Nonlinearity - %RO
 Nonlinearity for SM-5000N - %RO
 Hysteresis - %RO
 Temp. Range Compensated
 Temperature effect on zero - %RO
 Zero Balance - %RO
 Shift Error: Rated Load applied 3 inches (76 mm) for SPI 3 thru 15 and 5 inches (127 mm) for SPI 25 thru 150 from Load Cell Centerline.
 % Rated Load/Inch (25.4mm)

3
 350 + 50 / -3.5
 350 +/- 3.5
 10
 +/- 0.02
 +/- 0.02
 < +/- 0.02
 -10 to 45C
 +/- 0.15
 < +/- 5
 0.012

SEALED SUPERBEAM LOAD

MODEL: SPI-7.5

Date: 06-MAY-2015

CAPACITY: 7.5 lbf

Serial: 741932

OUTPUT, COMPRESSION 3.39277 mV/V



Warranty & Certification Statement on reverse side.