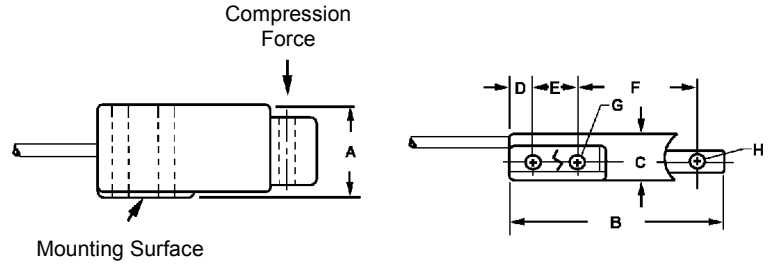


## INSTALLATION DIMENSIONS

MODEL		A	B	C	D	E	F	G	H
MB-5,10 25, 50 100, 150	in.	1	2-3/8	1/2	1/4	.500	1-5/16	11/64	11/64
	mm	25.7	60.5	12.7	6.4	12.7	33.3	4.3	4.3
MB-250	in.	1	2-3/8	3/4	1/4	.500	1-5/16	11/64	11/64
	mm	25.9	60.5	19.1	6.4	12.7	33.3	4.3	4.3

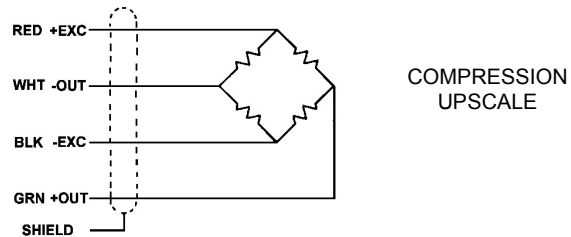


Mounting Instructions: Fasten securely to flat rigid surface with two 8-32 X 1-1/4 screws. Torque to 24-inch pounds (2.7Nm) for best performance

## ELECTRICAL INFORMATION

MB Series are provided with a 4-conductor shielded cable (AWG-28) 1.5m long.

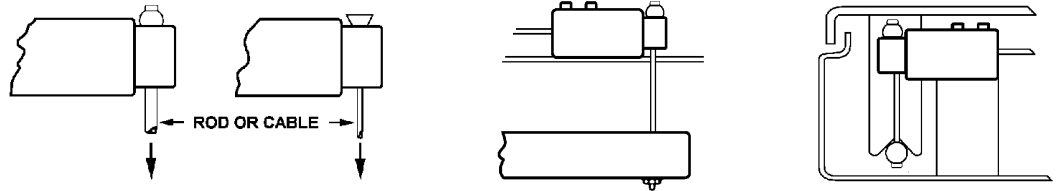
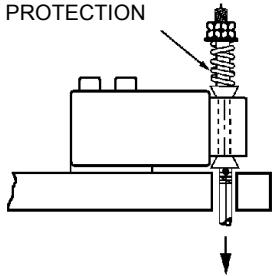
Wiring color code complies with ISA S37.8 "Specifications and Tests for Strain Gage Force Transducers" and SMA Load Cell Terminology



## INSTALLATION DIMENSIONS

1. The Minibeam load cells are designed for controlled environment applications. In general, they can be used anywhere a readout instrument can be used.
2. NOTE: Please exercise caution during handling and installation of these load cells. The application of a force equaling more than 150% of the rated capacity (7.5 lbs on MB-5, 15 lbs on MB-10, 37.5 lbs. on MB-25 etc.) can result in irreparable damage.
3. These units are not intended for submerged operation. A Moisture Resistance coating is applied for capacities 25 thru 250 lbs. to protect MB Series from high humidity conditions up to and including 95% Relative Humidity and periodic exposure to condensation.

PRELOADED  
SPRING  
OVERLOAD  
PROTECTION



TYPICAL INSTALLATION & ATTACHMENTS

For spring overload detail, request IFI #32

## PERFORMANCE DATA

Nominal Output - mV/V	3
Input Resistance Ohms	350 + 50 / -3.5
Output Resistance Ohms	350 ± 3.5
Recommended Excitation Vdc	10
Nonlinearity - %RO	< ± 0.03
Hysteresis - %RO	< ± 0.02
Temp. Range Compensated	-15 to 65°C
Temperature effect on zero - %RO	± 0.15
Zero Balance - %RO	< ± 1

## MINIBEAM LOAD CELL

MODEL: MBP-100N

Date: 02-MAR-2015

CAPACITY: 100 N

Serial: 718311

OUTPUT, COMPRESSION 2.97302 mV/V

Interface Inc.  
Scottsdale, AZ. USA  
Telephone (480) 948-5555 FAX (480)

Warranty & Certification Statement on reverse side.

