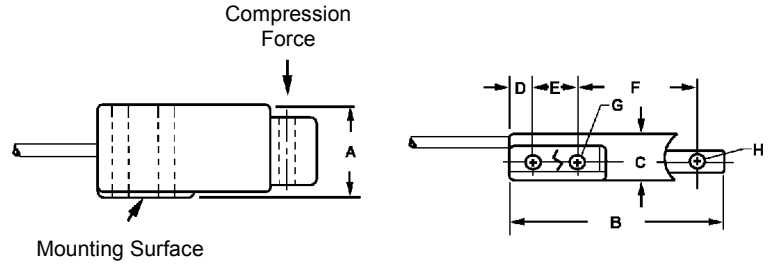


INSTALLATION DIMENSIONS

MODEL		A	B	C	D	E	F	G	H
MB-5,10 25, 50 100, 150	in.	1	2-3/8	1/2	1/4	.500	1-5/16	11/64	11/64
	mm	25.7	60.5	12.7	6.4	12.7	33.3	4.3	4.3
MB-250	in.	1	2-3/8	3/4	1/4	.500	1-5/16	11/64	11/64
	mm	25.9	60.5	19.1	6.4	12.7	33.3	4.3	4.3

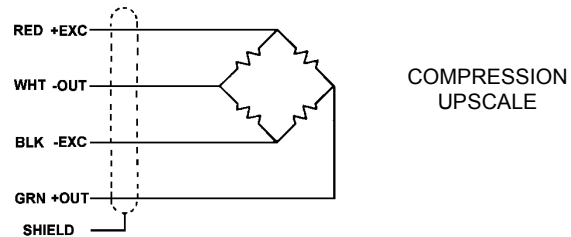


Mounting Instructions: Fasten securely to flat rigid surface with two 8-32 X 1-1/4 screws. Torque to 24-inch pounds (2.7Nm) for best performance

ELECTRICAL INFORMATION

MB Series are provided with a 4-conductor shielded cable (AWG-28) 1.5m long.

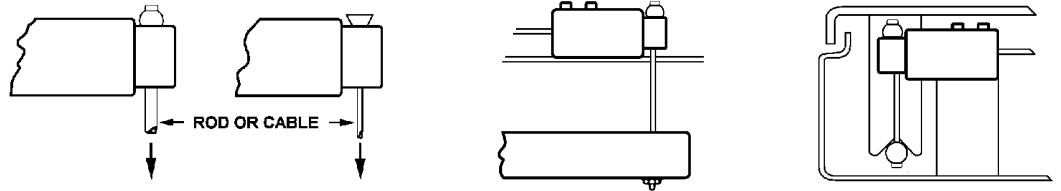
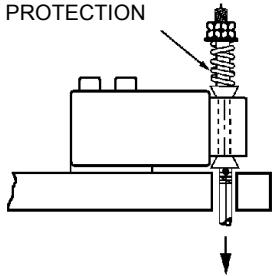
Wiring color code complies with ISA S37.8 "Specifications and Tests for Strain Gage Force Transducers" and SMA Load Cell Terminology



INSTALLATION DIMENSIONS

1. The Minibeam load cells are designed for controlled environment applications. In general, they can be used anywhere a readout instrument can be used.
2. NOTE: Please exercise caution during handling and installation of these load cells. The application of a force equaling more than 150% of the rated capacity (7.5 lbs on MB-5, 15 lbs on MB-10, 37.5 lbs. on MB-25 etc.) can result in irreparable damage.
3. These units are not intended for submerged operation. A Moisture Resistance coating is applied for capacities 25 thru 250 lbs. to protect MB Series from high humidity conditions up to and including 95% Relative Humidity and periodic exposure to condensation.

PRELOADED
SPRING
OVERLOAD
PROTECTION



TYPICAL INSTALLATION & ATTACHMENTS

For spring overload detail, request IFI #32

PERFORMANCE DATA

Nominal Output - mV/V	3
Input Resistance Ohms	350 + 50 / -3.5
Output Resistance Ohms	350 ± 3.5
Recommended Excitation Vdc	10
Nonlinearity - %RO	< ± 0.03
Hysteresis - %RO	< ± 0.02
Temp. Range Compensated	-15 to 65°C
Temperature effect on zero - %RO/°C	± 0.0027
	< ± 1

MINIBEAM LOAD CELL

MODEL: MB-50

Date: 21-JUL-2015

CAPACITY: 50 lbf

Serial: 746446

OUTPUT, COMPRESSION 3.16921 mV/V

Interface Inc.
Scottsdale, AZ. USA
Telephone (480) 948-5555 FAX (480)

Warranty & Certification Statement on reverse side.

