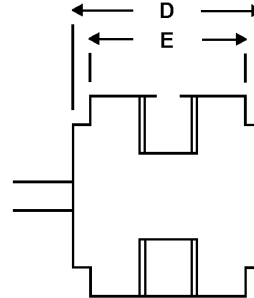
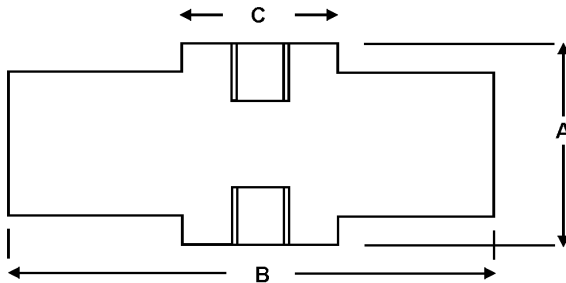


INSTALLATION DIMENSIONS

Capacity (lb)	A	B	C	D	E	Thread
5, 10	.73	1.80	.50	.52	.34	10-32 X .20
25, 50, 100	.73	2.00	.50	.64	.47	1/4-28 X .23
200,300	.98	2.12	.57	.90	.72	3/8-24 X .37
500, 1000	.98	2.12	.57	.90	.72	3/8 - 24 X .37
2000	1.24	2.80	.77	1.00	.98	1/2 - 20 X .49

Capacity (N)	A	B	C	D	E	Thread
22, 45	.73	1.80	.50	.52	.34	M5 X .8-6H
110, 220, 450	.73	2.00	.50	.64	.47	M6 X 1-6H
900, 1300	.98	2.12	.57	.90	.72	M8 X 1.25-6H
2200, 4500	.98	2.12	.57	.90	.72	M8 X 1.25-6H
9000	1.24	2.80	.77	1.00	.98	M12 X 1.75-6H



ELECTRICAL INFORMATION

The standard SML is supplied with shielded cable 4-conductor AWG28 5 ft. long. O.D. = 0.125 inch. The shield is not connected to the load cell body. Tension is positive reading.

Color	Function
Red	+ Excitation
Green	+ Output
White	- Output
Black	- Excitation

APPLICATION NOTES

1. The SML is intended for controlled environment applications. It may be used in humidity up to 95% RH non-condensing. It is not recommended for exposure to spray or submersion.
2. Use CAUTION in handling and mounting. Low capacity cells can easily be overloaded and permanently damaged. Torque should be reacted on the load cell structure near the thread being mounted.

Mounting torque should be limited to:

SML	5-100 lbf	(22-450N)	Capacity x 0.4 inch (.010m)
SML	200-1000 lbf	(900-4500N)	Capacity x 0.2 inch (.005m)
SML	2000 lbf	(9000N)	Capacity x 0.3 inch (.008m)

3. The force to be measured should be applied to the active end of the load cell to avoid interaction of the cable. The active end is opposite of the cover attachment screws. The inactive end is near the attachment screws and is mechanically connected to the cable.

PERFORMANCE DATA

Input Resistance Ohms	350 + 50 / -3.5
Output Resistance Ohms	350 +/- 3.5
Recommended Excitation Vdc	10
Nonlinearity 500, 1000 (2200N, 4500N) %FS	< 0.10
Nonlinearity 2000 (9000N) %FS	< 0.20
Nonlinearity All Others %FS	< 0.05
Hysteresis 500, 1000 %FS	< 0.10
Hysteresis 2000 (9000N) %FS	< 0.10
Hysteresis All Others %FS	< 0.05
Zero Balance %RO	< 1.00

SML LOAD CELL

MODEL: SML- 45N

CAPACITY: 45 N

OUTPUT: 2.13207 mV/V

Date: 26- AUG- 2013

Serial: 415944

Interface Inc.
Scottsdale, AZ. USA
Telephone (480) 948-5555 FAX (480)

Warranty & Certification Statement on reverse side.

