

# Model 1500 Standard Low Capacity Load Cell (U.S. & Metric)

Why the Interface model 1500 Standard Low Capacity Load Cell is the best in class:

- Proprietary Interface temperature compensated strain gages
- Performance to .05%
- Compact 2¾ in (70 mm) diameter
- Fatigue rated
- Eccentric load compensated
- .0008%/°F (.0015%/°C) temp. effect on output
- Shunt calibration
- Low deflection



## SPECIFICATIONS

### ACCURACY – (MAX ERROR)

Static Error Band-% FS	±0.05
Nonlinearity-% FS	±0.05
Hysteresis-% FS	±0.05
Nonrepeatability-% RO	±0.02
Creep, in 20 min-%	±0.025
Eccentric Load Sensitivity-%/in	±0.25

### TEMPERATURE

Compensated Range-°F	15 to 115
Compensated Range-°C	-10 to 45
Operating Range-°F	-65 to 200
Operating Range-°C	-55 to 90
Effect on Output-%/°F – MAX	±0.0008
Effect on Output-%/°C – MAX	±0.0015
Effect on Zero-% RO/°F – MAX	±0.0015
Effect on Zero-% RO/°C – MAX	±0.0027

### ELECTRICAL

Rated Output-mV/V (Nominal)	2.0
Zero Balance-% RO	±1.0
Bridge Resistance-Ohm (Nominal)	700
Excitation Voltage – VDC - MAX	20
Insulation Resistance – Megohm	5000

### MECHANICAL

Calibration	Tension & Compression
Safe Overload-% CAP	±150
Connector	PT02E-10-6P
Deflection @ RO-inch	0.003 (0.08mm)
Natural Frequency	

lbf	N	Hz
25	125	2000
50	250	2500
100	500	4000
200	1000	6000
300	1500	7500

Weight .....1 lb (0.45 Kg)

## OPTIONS\* Page 169

Dual Bridge  
Standardized Output  
See Transducer Electronic Data Sheet (TEDS) Page 149

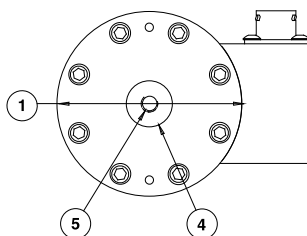
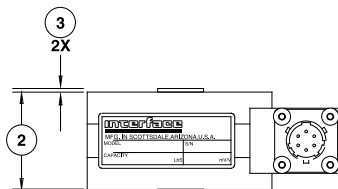
## ACCESSORIES\* Page 172

Mating Cable  
Instrumentation  
Mounting Hardware

\*See appendix for more technical information

## STANDARD CONFIGURATIONS

Single Bridge (1500ASK-nn)  
Dual Bridge (1500ASL-nn)



## DIMENSIONS

See Drawing	CAPACITY	
	U.S. (lbf)	Metric (N)
	25, 50, 100, 200, 300	125, 250, 500, 1000, 1500
	inch	mm
①	2.75	69.8
②	1.50	38.1
③	0.03	0.6
④	0.69	17.5
⑤	1/4-28 UNF 0.25 in deep	M6 X 1-6H 6.4 mm deep