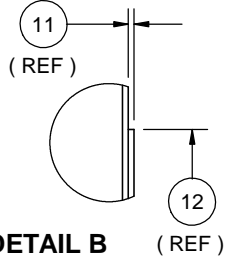


80392

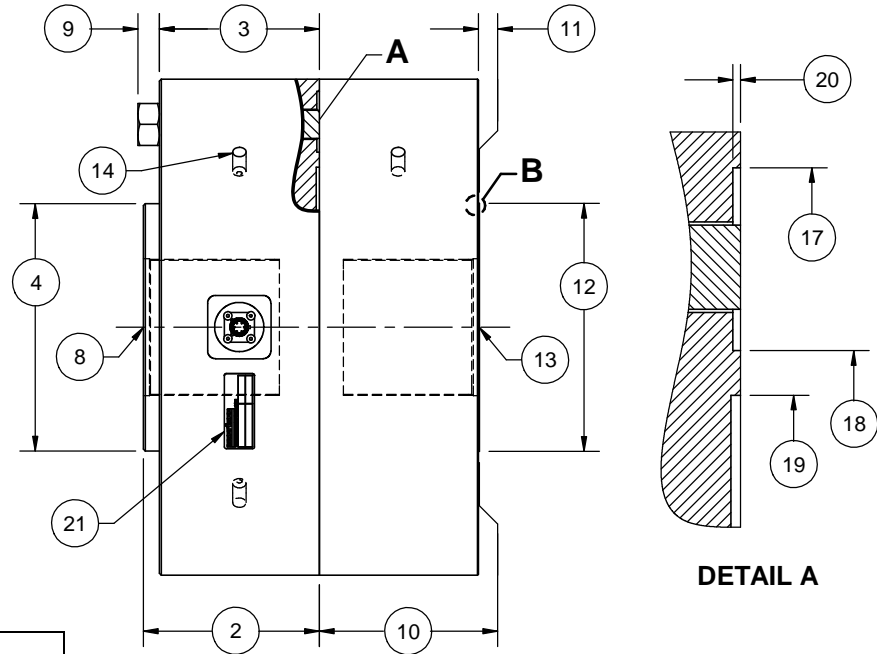
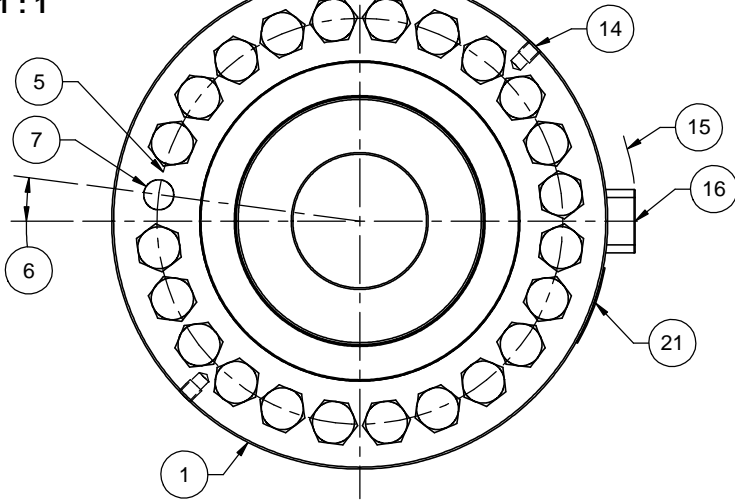
REVISIONS

REV	DESCRIPTION	DATE	APPROVED
A	INITIAL RELEASE	09/23/02	
B	OFFSET LIFTING THD. 45° FROM CONN. HOLE	12/02/03	
C	Ø 12.68 WAS Ø 12.62, BOLT CIRCLE	09/13/04	
D	ADDED 2.7 MN CAPACITY	02/11/10	

Interface Inc. claims proprietary rights in the information disclosed herein. This drawing is furnished in confidence on the express understanding that neither it nor any reproduction thereof will be disclosed to others or used for the purpose of manufacture or procurement of the article or part shown herein without written permission of Interface Inc. The drawing shall remain the property of Interface Inc. and shall be returned upon request by Interface Inc.



DETAIL B  
SCALE 1:1



FLEXURE BASE

DETAIL A

#	LOAD CELL CHARACTERISTICS	CAPACITIES
	CAPACITIES	600 K lbf, 2.7 MN
1	OUTSIDE DIAMETER	Ø 15.50 (Ø 393.7)
2	HUB SURFACE TO MOUNTING SURFACE	5.50 (139.7)
3	BOLT SURFACE TO MOUNTING SURFACE	5.00 (127.0)
4	HUB SURFACE DIAMETER	Ø 7.73 (Ø 196.3)
5	MOUNTING BOLT CIRCLE	Ø 12.684 (Ø 322.17)
6	MOUNTING BOLT OFFSET ANGLE	7.50°
7	MOUNTING BOLT THRU HOLE Ø	24X Ø 0.94 (Ø 24.0) THRU
8	FLEXURE THREAD, DEPTH & COUNTERBORE	4.250-8 UN-3B $\nabla$ 4.25, $\square$ Ø 4.28 $\nabla$ 0.19 M120 X 4-4H $\nabla$ 108.0, $\square$ Ø 120.9 $\nabla$ 4.8
9	BOLT HEAD HEIGHT	0.68 (17.3) MAX.
10	BASE HEIGHT	5.00 (127.0)
11	BASE PAD HEIGHT	0.03 (0.8)
12	BASE PAD DIAMETER	Ø 7.75 (Ø 196.9)
13	BASE THREAD, DEPTH & COUNTERBORE	4.250-8 UN-3B $\nabla$ 4.25, $\square$ Ø 4.28 $\nabla$ 0.19 M120 X 4-4H $\nabla$ 108.0, $\square$ Ø 120.9 $\nabla$ 4.8
14	LIFTING THREADS (2 IN FLEXURE)	0.500-13 UNC-2B $\nabla$ 0.50
15	ROTATIONAL CLEARANCE	R 8.67 (220.2) MIN.
16	CONNECTOR TYPE	PT02E-10-6P
17	OUTER RING INNER DIAMETER	Ø 14.76 (Ø 374.9)
18	INNER RING OUTER DIAMETER	Ø 10.95 (Ø 278.1)
19	INNER RING INNER DIAMETER	Ø 10.02 (Ø 254.5)
20	RECESSED HUB SURFACE / AREAS	0.03 (0.8)
21	IDENTIFICATION LABEL INCLUDING: MODEL, CAPACITY, SERIAL NUMBER & OUTPUT	

1. DIMENSIONS IN INCHES (mm).
2. DIMENSIONAL TOLERANCE:  $\pm 0.01$  ( $\pm 0.3$ ).
3. BASE IS OPTIONAL. MODEL NUMBERS ENDING IN (-B) HAVE A BASE INSTALLED.
4. CONNECTOR POSITIONS ON DUAL BRIDGE LOAD CELLS ARE ORIENTED 90° APART.

CONNECTOR PINOUT	
PIN	FUNCTION
A	+ EXCITATION
B	+ SIGNAL
C	- SIGNAL
D	- EXCITATION
E	N/ C
F	N/ C

TENSION UPSCALE

REMOVE BURRS AND SHARP EDGES .02 MAX SURFACE FINISH 63 MICROINCHES	
CREATOR	DATE
DESIGNED: JOE G.	09/18/02
DETAILED: JEP	09/18/02
CAM DATA:	

**interface**  
ADVANCED FORCE MEASUREMENT  
7401 E. BUTHERUS DR. SCOTTSDALE, AZ USA 85260

TITLE:  
**OUTLINE MODEL 1X60**

SIZE: DWG. NO: **80392** REV: **D**

SCALE: 1:6 SHEET 1 OF 1

CAD FILE <N:\-80392D.SLD\*\*\*>