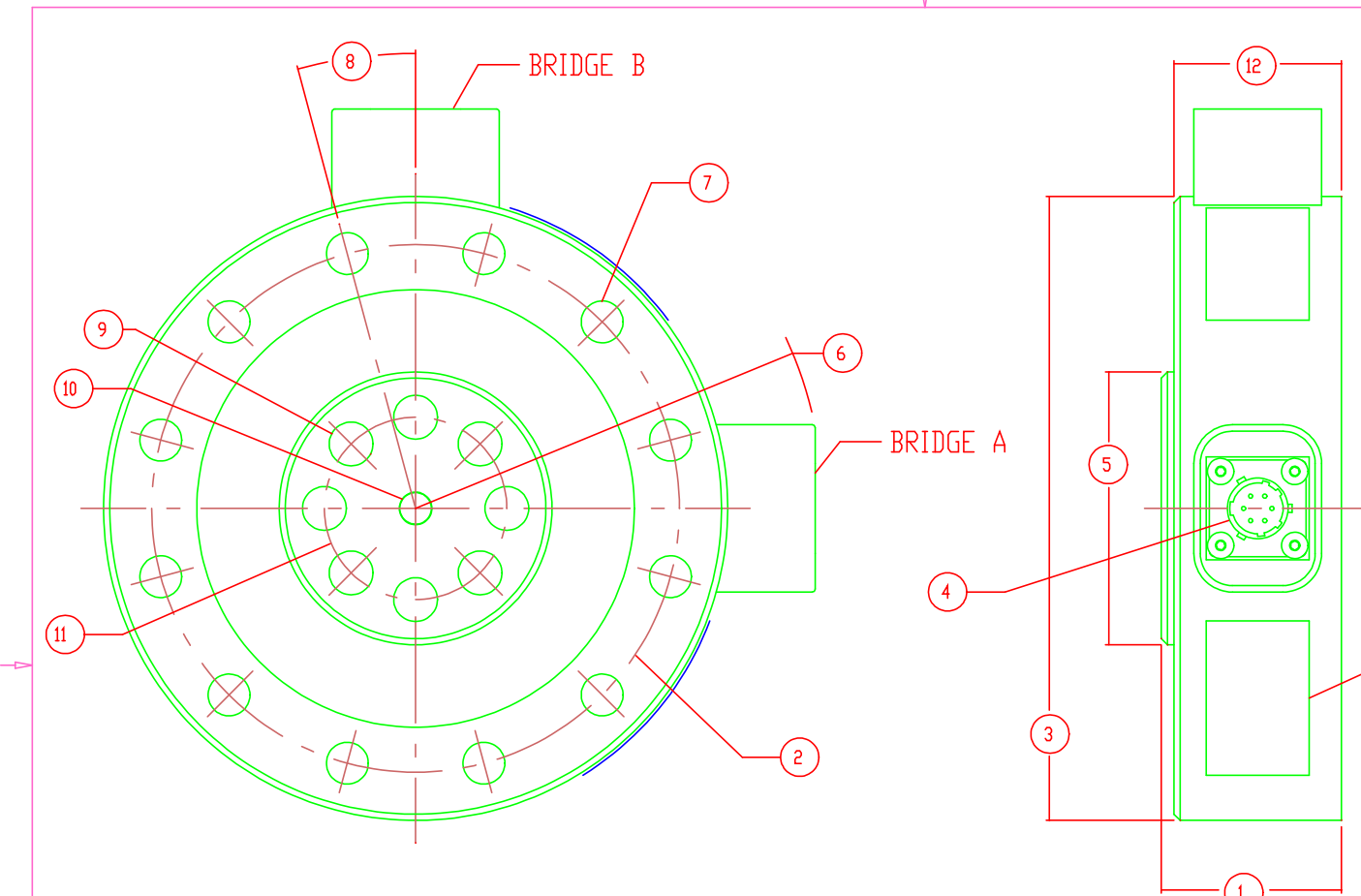


REVISIONS			
REV	DESCRIPTION	DATE	APPROVED
A	INITIAL RELEASE	01-22-04	
B	WT. BOLT OFFSET 15° WAS 11.25°	03-24-04	



CONNECTOR PINOUT	
PIN	FUNCTION
A	+ EXCITATION
B	+ OUTPUT
C	- OUTPUT
D	- EXCITATION
E	+ SENSE
F	- SENSE

ALL READ UPSCALE IN TENSION AND DOWNSCALE IN COMPRESSION

LOAD CELL CHARACTERISTICS		SI CAPACITIES	
#	CAPACITY	140 (kN)	
1	HUB SURFACE TO MOUNTING SURFACE	1.75 (44.6)	
2	MOUNTING BOLT CIRCLE	5.12 (130)	
3	OUTSIDE DIAMETER	6.06 (154)	
4	CONNECTOR TYPE	PT02E-10-6P	
5	HUB SURFACE DIAMETER	2.65 (67.3)	
6	ROTATIONAL CLEARANCE	3.96 (100)	
7	MOUNTING BOLT THRU HOLE	Ø.406 (10.3)	
8	MOUNTING BOLT OFFSET ANGLE	15°	
9	FLANGE MOUNTING HOLES	Ø0.424 (10.8)	
10	ALIGNMENT HOLE	Ø0.307 (7.8) THRU, L 0.016 (8.02) X 0.394 (10) DEEP	
11	FLANGE MOUNTING BOLT CIRCLE	1.772 (45)	
12	BOLT SURFACE TO MOUNTING SURFACE	1.62 (41.1)	
13	IDENTIFICATION LABEL INCLUDING: MODEL, CAPACITY, SERIAL NUMBER & OUTPUT		

3 LABEL INSTALLED UPSIDE DOWN.

2. DIMENSIONAL TOLERANCE: ±0.01 (0.3)

1. DIMENSIONS IN INCHES & (MM)

**Interface, Inc.**  
7401 E. BETHERUS DR. SCOTTSDALE, ARIZONA 85260

TITLE: OUTLINE MODEL: 1220-140KN FLANGE MOUNT	DWG NO: <b>80463</b>		
SIZE: A	DRAWN BY: JEP	DATE: 01-14-04	REV: B
SCALE: 2:1	APPROVED BY:	SHEET 1 OF 1	

Interface Inc. claims proprietary rights in the information disclosed herein. This drawing is furnished in confidence on the express understanding that neither it nor any reproduction thereof will be disclosed to others or used for the purpose of manufacture or procurement of the article or part shown herein without written permission of Interface Inc. The drawing shall remain Interface's property and shall be returned on Interface's request.