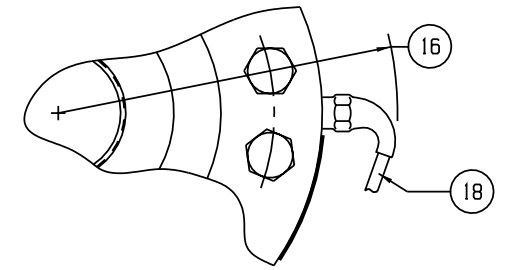
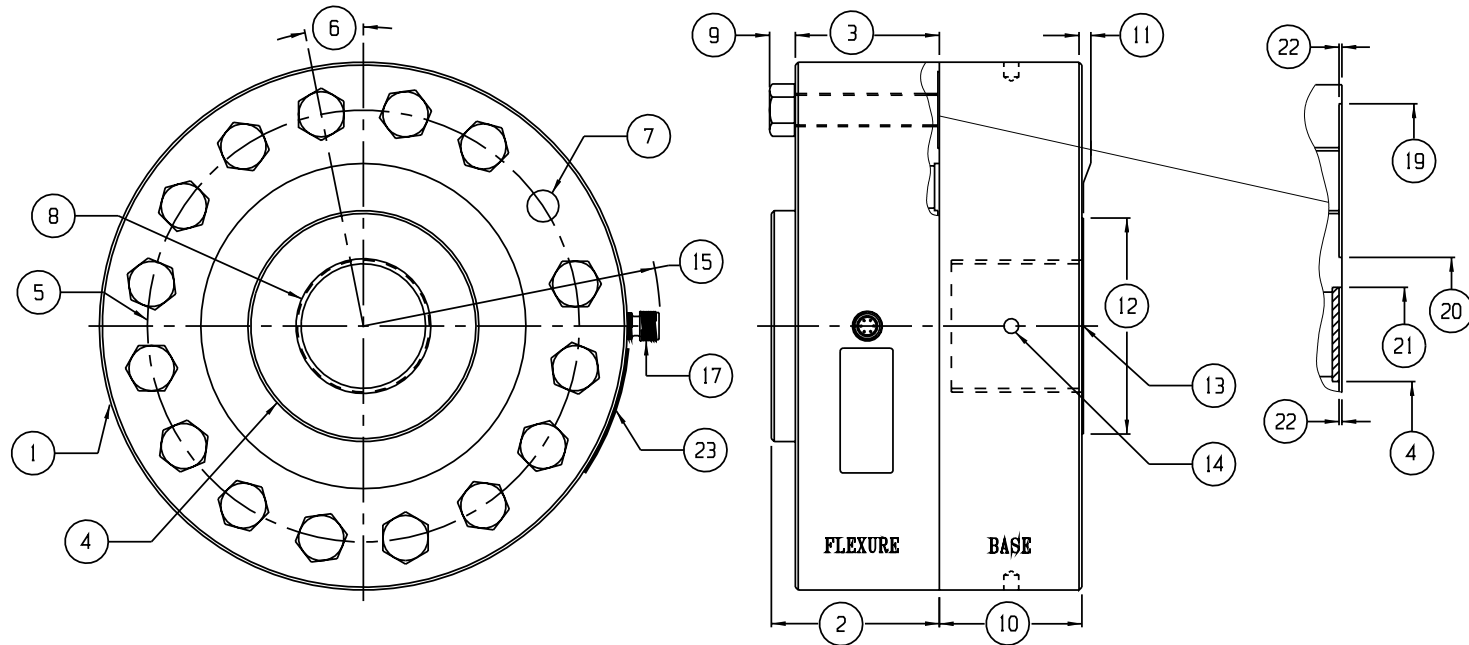


REVISIONS			
REV	DESCRIPTION	DATE	APPROVED
A	ADDED CAPACITY 100K	01-03-02	
B	PRELIMINARY	06-01-06	



#	LOAD CELL CHARACTERISTICS	U.S. CAPACITIES		SI CAPACITIES	
	CAPACITY:	100K	200K (1bf)	450	900 (kN)
1	OUTSIDE DIAMETER	11.00 (279)			
2	HUB SURFACE TO MOUNTING SURFACE	3.50 (89)			
3	BOLT SURFACE TO MOUNTING SURFACE	3.00 (76)			
4	HUB SURFACE DIAMETER	4.81 (122.2)			
5	MOUNTING BOLT CIRCLE	9.00 (229)			
6	ANGLE	11.25°			
7	MOUNTING BOLT HOLE	Ø 0.66 (16.8) THRU			
8	FLEXURE THREAD & DEPTH	2.750-8 UNF-3B X 3.25 C' BORE Ø 2.770 X 0.12 DEEP		M72 X 2-4H X 82.6 C' BORE Ø 2.855 X 3.0 DEEP	
9	BOLT HEAD HEIGHT	0.50 (12.7)			
10	BASE HEIGHT	3.00 (76)			
11	BASE PAD HEIGHT	0.03 (0.8)			
12	BASE PAD DIAMETER	4.50 (114)			
13	BASE THREAD & DEPTH	2.750-8 UNF-3B X 3.25 C' BORE Ø 2.770 X 0.12 DEEP		M72 X 2-4H X 82.6 C' BORE Ø 2.855 X 3.0 DEEP	
14	(4) SPANNER HOLES SPACED AT 90°	Ø 0.31 X 0.31 DEEP (Ø 7.9 X 7.9 DEEP)			
15	ROTATIONAL CLEARANCE (CONNECTOR)	6.19 (157) MIN			
16	ROTATIONAL CLEARANCE (INTEGRAL CABLE)	7.31 (185.7) MIN			
17	CONNECTOR TYPE	PC04E-10-6P			
18	CABLE TYPE [4]	.25 (6.4) O.D. 7 CONDUCTOR 22 GAGE SHIELDED CABLE			
19	OUTER RING INNER DIAMETER	10.60 (269.2)			
20	INNER RING OUTER DIAMETER	7.40 (187.9)			
21	INNER RING INNER DIAMETER	6.78 (172.2)			
22	RECESSED HUB SURFACE	0.03 (76.2)			
23	IDENTIFICATION LABEL INCLUDING: MODEL, CAPACITY, SERIAL NUMBER & OUTPUT				

CONNECTOR MODELS		INTEGRAL CABLE MODELS	
PIN	FUNCTION	COLOR	FUNCTION
A	+ EXCITATION	RED	+ EXCITATION
B	+ OUTPUT	GREEN	+ OUTPUT
C	- OUTPUT	WHITE	- OUTPUT
D	- EXCITATION	BLACK	- EXCITATION
E	NO CONNECTION	WHITE/RED	+ SENSE
F	NO CONNECTION	WHITE/BLACK	- SENSE
STANDARD CONNECTION		WHITE/YELLOW	SHUNT CAL.
		SHIELD	NO CONNECTION

ALL READ UPSCALE IN TENSION

- 5. CONNECTOR/CABLE POSITIONS FOR MULTIPLE BRIDGE ARE AT 90 DEG CCW INCREMENTS
- [4] STANDARD CABLE LENGTH IS 10 FT (3 M) NON-STANDARD CABLE LENGTH PER OPTION CODE
- 3. BASE IS OPTIONAL ON 1240, WHERE MODEL NUMBERS ENDING IN (-B) HAVE A BASE INSTALLED
- 2. DIMENSIONAL TOLERANCE: +/- 0.01 (mm +/- 0.3)
- 1. DIMENSIONS IN INCHES & (MM)

Interface, Inc.
7401 E. BUTHERUS DR. SCOTTSDALE, ARIZONA 85260

TITLE: OUTLINE MODEL: 1040 1140 & 1240	DWG NO.: 80010
SIZE: C	DRAWN BY: BKS
DATE: 03-28-95	REV: B
SCALE: 2:1	APPROVED BY:
SHEET 1 OF 1	

Interface Inc. claims propriety rights in the information disclosed herein. This drawing is furnished in confidence on the express understanding that neither it nor any reproduction thereof will be disclosed to others or used for the purpose of manufacture or procurement of the article or part shown herein without written permission of Interface Inc. The drawing shall remain Interface's property and shall be returned on Interface's request.