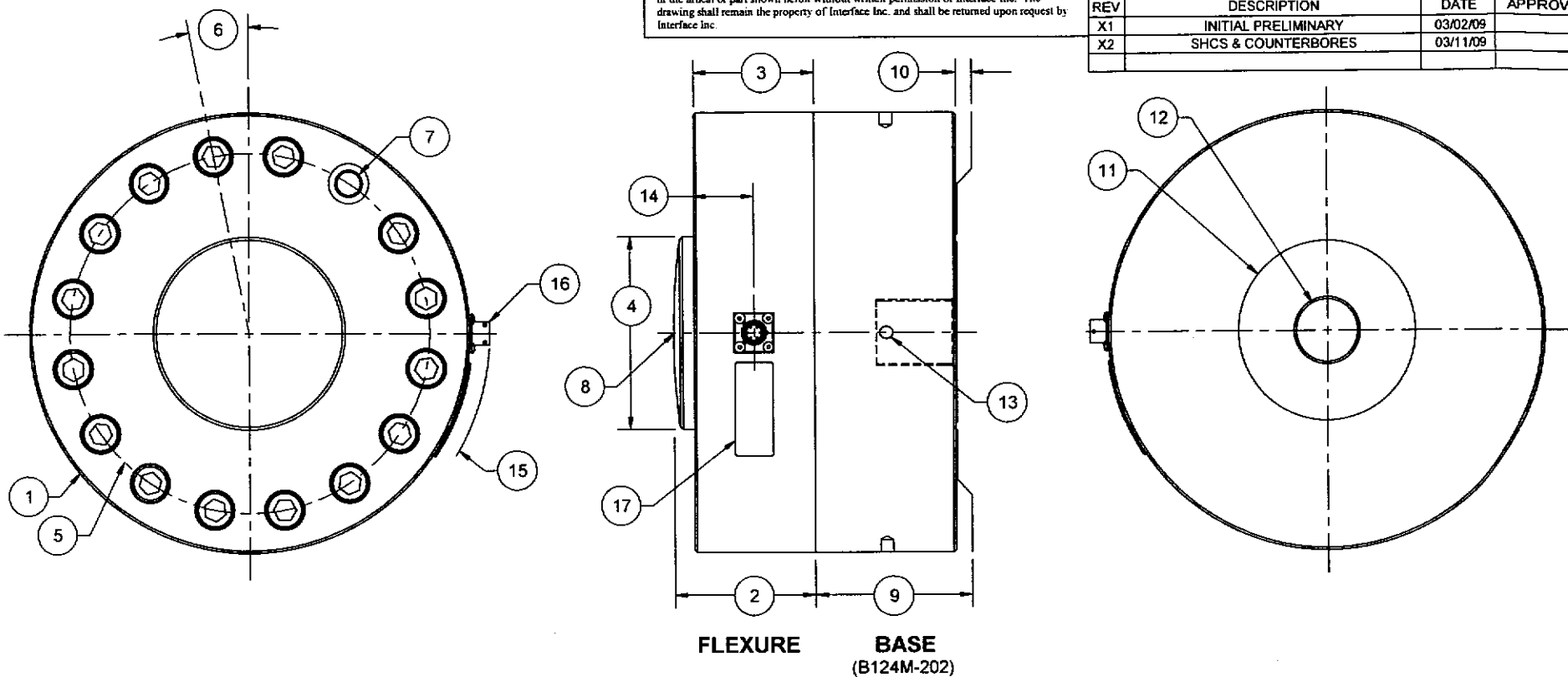


Interface Inc. claims proprietary rights in the information disclosed herein. This drawing is furnished in confidence on the express understanding that neither it nor any reproduction thereof will be disclosed to others or used for the purpose of manufacture or procurement of the article or part shown herein without written permission of Interface Inc. The drawing shall remain the property of Interface Inc. and shall be returned upon request by Interface Inc.

REVISIONS			
REV	DESCRIPTION	DATE	APPROVED
X1	INITIAL PRELIMINARY	03/02/09	
X2	SHCS & COUNTERBORES	03/11/09	



LOAD CELL CHARACTERISTICS		CAPACITIES
#	CAPACITY	1800 kN
1	OUTSIDE DIAMETER	Ø 11.00 (Ø 279.4)
2	HUB SURFACE TO MOUNTING SURFACE	3.50 (88.9)
3	BOLT SURFACE TO MOUNTING SURFACE	3.00 (76.2)
4	HUB SURFACE DIAMETER	Ø 4.812 ± 0.005 (Ø 122.22 ± 0.13)
5	MOUNTING BOLT CIRCLE	Ø 9.000 ± 0.005 (Ø 228.60 ± 0.13)
6	MOUNTING BOLT OFFSET ANGLE	11.25°
7	MOUNTING BOLT HOLE	Ø 0.656 ± 0.005 (Ø 16.66 ± 0.13) └─┘ Ø 1.000 ± 0.005 ─┘ 0.625 ± 0.005 (└─┘ Ø 25.40 ± 0.13 ─┘ 15.88 ± 0.13)
8	INTEGRAL HUB SPHERICAL RADIUS	R 18.00 (457.2)
9	BASE HEIGHT	3.50 (88.9)
10	BASE PAD HEIGHT	0.03 (0.8)
11	BASE PAD DIAMETER	Ø 4.50 (Ø 114.3)
12	BASE THREAD, DEPTH & COUNTERBORE	M42 X 2-6H ─ 2.00 (50.8), └─┘ Ø 1.68 (Ø 42.7) ─ 0.12 (3.0)
13	(4) SPANNER HOLES SPACED AT 90°	Ø 0.31 ─ 0.31 (Ø 7.9 ─ 7.9)
14	CONNECTOR HEIGHT	1.50 (38.1)
15	ROTATIONAL CLEARANCE	6.00 (152.4) MIN.
16	CONNECTOR TYPE	PT02E-10-6P
17	IDENTIFICATION LABEL INCLUDING: MODEL, CAPACITY, SERIAL NUMBER & OUTPUT	

1. DIMENSIONS IN INCHES (mm).
2. DIMENSIONAL TOLERANCE: ± 0.01 (± 0.3).
3. BASE IS OPTIONAL. MODEL NUMBERS ENDING IN (-B) HAVE A BASE INSTALLED.
4. CONNECTOR POSITIONS ON DUAL BRIDGE LOAD CELLS ARE ORIENTED 90° APART.

CONNECTOR PINOUT	
PIN	FUNCTION
A	+ EXCITATION
B	+ SIGNAL
C	- SIGNAL
D	- EXCITATION
E	- SENSE
F	+ SENSE

COMPRESSION UPSCALE

REMOVE BURRS AND SHARP EDGES. Ø2 MAX SURFACE FINISH 63 MICRONS

interface
ADVANCED FORCE MEASUREMENT
7401 E. BUTHERUS DR. SCOTTSDALE, AZ USA 85260

CREATOR: KEN V.
DATE: 03/02/09
DESIGNED BY: M.S.E.
DATE: 03/02/09

TITLE: **OUTLINE MODEL 1243BAY-1.8MN-B**

CAM DATA:

SIZE: A
DWG. NO.: 80876
SCALE: 1:4
SHEET 1 OF 1

REV: X2