

4

3

2

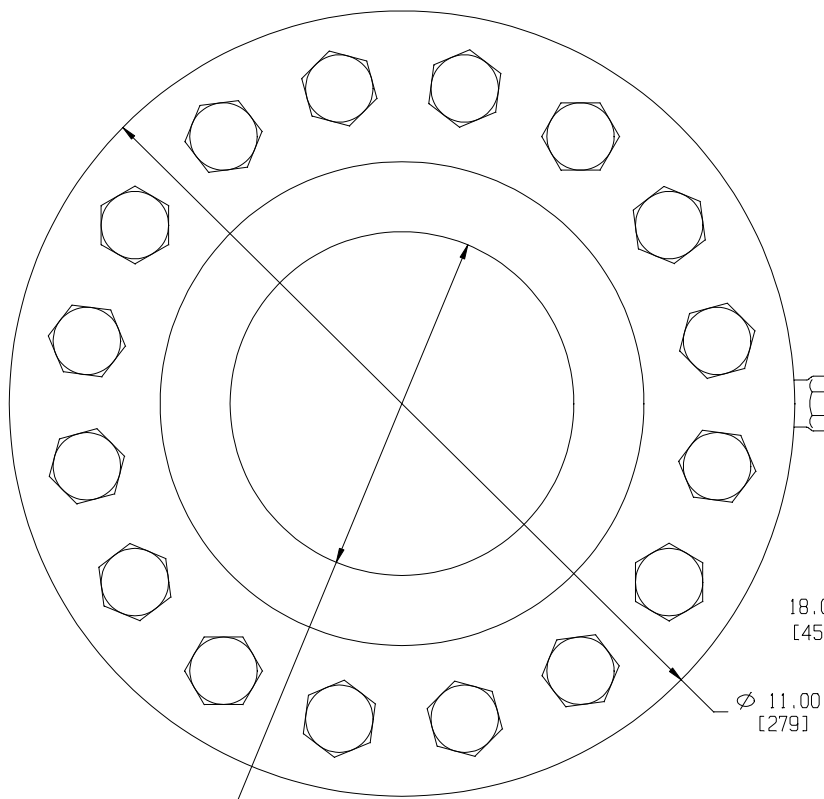
1

80114

REVISIONS

REV	DESCRIPTION	DATE	APPROVED

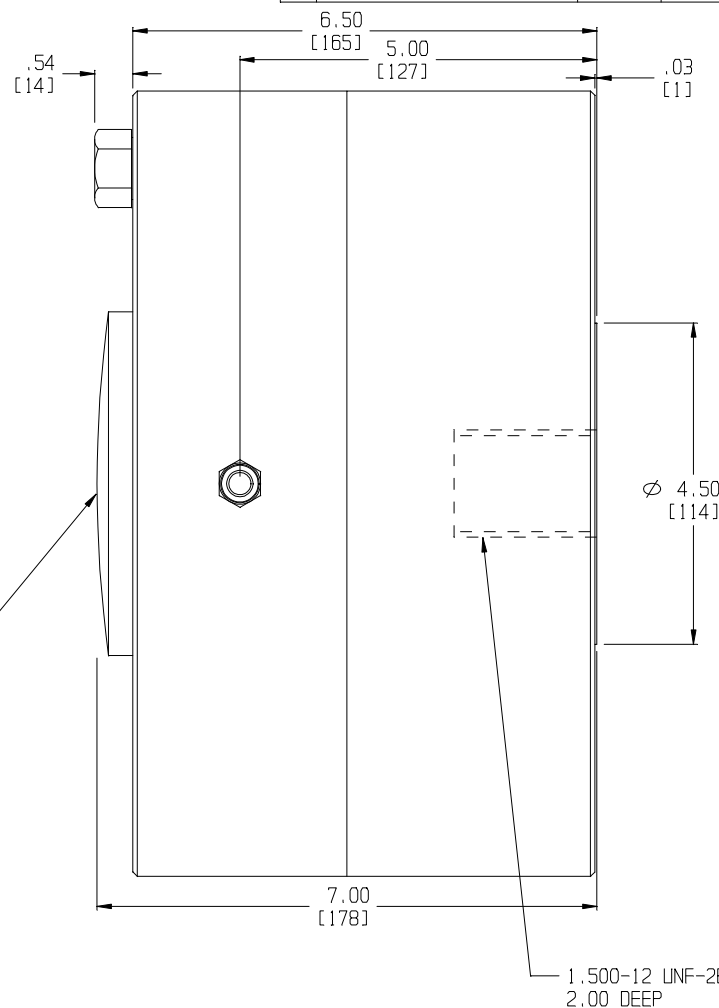
20 FOOT 7 CONDUCTOR CABLE



18.00 SPHERICAL RADII

Ø 11.00 [279]

Ø 4.81 [122]



.54 [14]

6.50 [165]

5.00 [127]

.03 [1]

Ø 4.50 [114]

7.00 [178]

1.500-12 UNF-2B
2.00 DEEP

Interface, Inc.

7401 E. BUTHERUS DR. SCOTTSDALE, ARIZONA 85260

TITLE: MODEL 1243-400K INTEGRAL RADII, MECHANICAL LAYOUT

DWG NO.: 80114

SIZE: C DRAWN BY: PER DATE: 8-23-95 REV:

SCALE: .75:1 APPROVED BY: SHEET 1 OF 1

UNLESS OTHERWISE SPECIFIED
 ANGLES +/- 0°30'
 TWO DECIMALS +/- .010
 THREE DECIMALS +/- .005
 STD. RADII .015-.035
 Ø RNDOUT .002 TO -A-
 REMOVE BURRS & SHARP EDGES .02 MAX
 SURFACE FINISH 63 MICROINCHES

Interface Inc. claims propriety rights in the information disclosed hereon. This drawing is furnished in confidence on the express understanding that neither it nor any reproduction thereof will be disclosed to others or used for the purpose of manufacture or procurement of the article or part shown hereon without written permission of Interface Inc. The drawing shall remain Interface's property and shall be returned on Interface's request.

4

3

2

1