

Model MBI Fatigue Rated Mini Beam Overload Protected Load Cell

Why the Interface model MBI Fatigue Rated Mini Beam Overload Protected Load Cell is the best in class:

- Proprietary Interface temperature compensated strain gages
- Performance to .03%
- Low height – 1 in
- .0008%/°F temp. effect on output
- 10X overload protection
- Eccentric load compensated



SPECIFICATIONS

ACCURACY – (MAX ERROR)

Nonlinearity-% FS	±0.03
Hysteresis-% FS	±0.02
Nonrepeatability-% RO	±0.01
Creep, in 20 min-%	±0.025
Eccentric load sensitivity-%/in	0.02

TEMPERATURE

Compensated Range-°F	70 to 170
Operating Range-°F	-40 to 175
Effect on Output-%/°F – MAX	±0.0008
Effect on Zero-% RO/°F – MAX	±0.002

ELECTRICAL

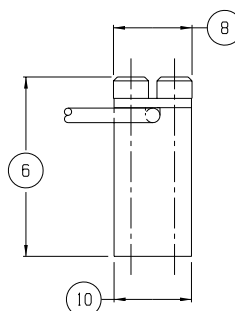
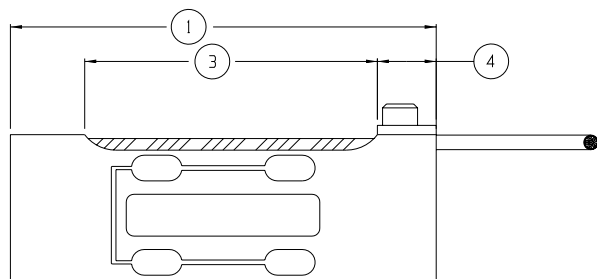
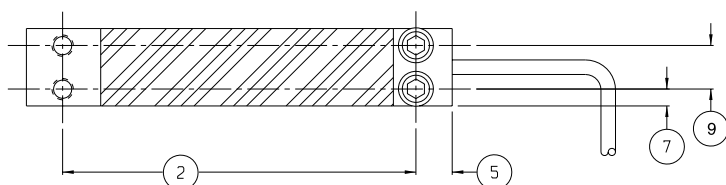
Rated Output-mV/V (Nominal)	2
Zero Balance-% RO	±1.0%
Bridge Resistance-Ohm (Nominal)	350
Excitation Voltage – MAX	15 VDC
Insulation Resistance-Megohm	5000

MECHANICAL

Calibration	Compression
Safe Overload-% CAP	1000
Cable length-ft	5

STANDARD CONFIGURATION

5 ft Integral Cable (MBI-nn)



DIMENSIONS

See Drawing	CAPACITY	
	U.S. (lbf)	Metric (N)
①	2, 5, 10	10, 20, 50
①	2.750	69.90
②	2.281	57.94
③	1.890	48.00
④	0.380	9.70
⑤	0.234	5.94
⑥	1.160	29.50
⑦	0.110	2.79
⑧	0.510	13.00
⑨	0.281	7.14
⑩	0.500	12.70