

www.interfaceforce.com

Our NEW website provides online tools for product pricing and availability, placing orders, order status, order history and access to your invoices

interface
ADVANCED FORCE & TORQUE MEASUREMENT

You aren't signed in. **Save 5%** [Locate a Distributor](#) | [E-mail Us](#) | [Phone Toll-Free 800.947.5598](#)

[Sign in or register to view pricing information.](#) Search

Load Cells / Force Sensors
Torque Sensors / Transducers
Displays & Instrumentation
Calibration Systems
Sensor System Accessories

Industries & Applications
Recalibration & Repair Service
Product Support
Download Our Catalog
Contact Us

Energy Industry

Interface has offered load cells for oil production monitoring for 20 years. Our 1923 Load-Trol has become the industry standard in the oil fields throughout the world. Interface also has invested heavily in test equipment for petroleum exploration applications. Interface has the ability to test our custom designs for down-hole applications under load as well as under pressure (up to 20,000 psi) and temperature (to 400 degrees F). This research and testing capability has provided our customers in the oil exploration industry a valuable resource. Interface has proven experience in designing custom down-hole force transducers, meeting the most demanding requirements of our customers.

The following are just a few examples of Interface oil production/exploration applications.

- Pump-off control/optimization
- Wire line tension control
- Coil tubing applications
- Down-hole tension monitoring
- Wire line spool tension control
- Calibration systems

Interface in Action

[interface-load-cells-in-use.html](#)
[Brochure: 787_dimensions.html](#)
[Load Cells](#)

Upcoming Events

Interface
ADVANCED FORCE & TORQUE MEASUREMENT

interface
ADVANCED FORCE & TORQUE MEASUREMENT

[Locate a Distributor](#) | [E-mail Us](#) | [Phone Toll-Free 800.947.5598](#)

[Buy Online Now](#) Search

Load Cells

View All Products

By Series: All | By Type: All | By Rated Capacity: 250 lbf All | Low | High | Paralle | Handbr.

Viewing 250 lbf Rated Capacity Load Cells

 1000 Fatigue Rated 250 lbf to 50K lbf	 1218 Axial Tension 125 lbf to 1K lbf	 1500 Standard Low 25 lbf to 300 lbf	 1606 Gold 50 lbf to 100 lbf
 2400 Standard 100 lbf to 5K lbf	 2404 Standard 50 lbf to 5K lbf	 SM S-Type Load 10 lbf to 1K lbf	 SM Sealed S-Type 50 lbf to 5K lbf
 SM S-Type 5 lbf to 10K lbf	 SM Low Height 5 lbf to 1K lbf	 SM Custom Load 5 lbf to 10K lbf	 WHC Miniature 5 lbf to 500 lbf

Select your language:

We Calibrate ALL Competitors' Load Cells

- 3 days guaranteed; custom calibrations available
- Hydraulic systems use a reversing actuator to apply tension and compression in the same setup
- Direct traceability to NIST
- System calibrations with any combination of load cells and instrumentation



interface

7401 East Butherus Drive, Scottsdale, Arizona 85260
Telephone: (480) 948-5555 Fax: (480) 948-1924
E-mail: info@interfaceforce.com Toll Free: (800) 947-5598

interface

ADVANCED FORCE & TORQUE MEASUREMENT



LOAD CELLS,
REACTION & ROTARY
TORQUE
SENSORS FOR
OIL & GAS APPLICATIONS

1923 – LoadTrol Load Cell

- Developed, field tested, accepted for oil field use
- Transient voltage protection from lightning and/or power line disturbances
- Rugged – life exceeds 50,000,000 cycles
- All-weather, waterproof, corrosion resistant
- Performance insensitive to temperature changes
- No welding or special brackets required
- Installs on polished rod



WMC Rod End Load Cell

- Proprietary Interface temperature compensated strain gages
- Environmentally sealed
- Stainless steel construction
- Low deflection
- Tension & compression

OPTIONS:

- Customized design
- Amplified output
- ATEX approval



LP – Loadpin

- Stainless steel construction
- Capable of 100% humidity, 30G mechanical shock and 5G vibration
- Used with clevises or pulley shafts to monitor loads

OPTIONS:

- Customized design
- Amplified output
- ATEX approval



3420 & 3430 Coil Tubing

- Hermetically sealed, welded
- Performance to .05%
- 4-20 mA output

OPTIONS:

- Customized design



2400 Standard Stainless Steel Load Cell

- Proprietary Interface temperature compensated strain gages
- Stainless steel construction
- Hermetically sealed, welded
- Tension & compression
- Compact size
- Counterbored mounting holes

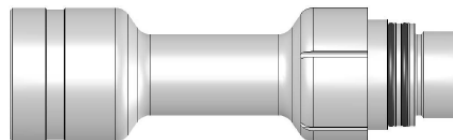
OPTIONS:

- Customized design
- Amplified output
- ATEX approval



Downhole Load Cells

- Protects against the loss of tooling during downhole insertion and retraction
- Pressure, temperature and force compensated at 5miles deep (500°F / 30 kpsi)
- Through hole or dead ended design



Combine Interface's engineering expertise with their knowledge of industry standards, requirements, and specifications and you get highly accurate load and torque sensors for the oil & gas industry. We manufacture sensors to meet your application needs for:

- 1) Monitoring tubing weight and insertion force
- 2) Footpad loads of injector head jackstands
- 3) Torque tong, or wire line safety monitoring.

Interface can provide customized designs built to meet oilfield-tough, and environmentally-harsh environments. Tens of thousands of our sensors are out there providing accurate and dependable performance in many of the world's harshest oil & gas environments.

We offer all stainless steel, welded and hermetically sealed coiled tubing load cells for use on coiled tubing injector stands, capable of measuring force in tension and compression. We can provide load pins to measure shear forces in a tongue and shackle assemblies. And we can provide very high temperature load cells capable of deep-well drilling monitoring, which are not affected by either harsh, or the electrically noisy environment in which they operate.

APPLICATION EXAMPLES:

- Mooring systems
- Crane pulley systems
- Gusset pin force in coil tubing
- Monitor tubing weight and insertion force
- Power tongs clamping force
- Measure joint torque for drill collars, drill pipe, or casing
- Torque tongs
- Drill pipe & collar torque
- Overhead drive systems
- Wireline tension
- Hook loads
- Dead line tension measurement
- Horizontal drilling